

CD179b Polyclonal Antibody

Catalog No: #40696

Package Size: #40696-1 50ul #40696-2 100ul

Orders: order@signalwayantibody.comSupport: tech@signalwayantibody.com

Description

Product Name	CD179b Polyclonal Antibody
Host Species	Rabbit
Clonality	Polyclonal
Purification	The antibody was affinity-purified from rabbit antiserum by affinity-chromatography using epitope-specific immunogen.
Applications	WB ELISA
Species Reactivity	Hu
Specificity	CD179b Polyclonal Antibody detects endogenous levels of CD179b protein.
Immunogen Type	peptide
Immunogen Description	Synthesized peptide derived from the N-terminal region of human CD179b.
Target Name	CD179b
Other Names	IGLL1; IGL1; Immunoglobulin lambda-like polypeptide 1; CD179 antigen-like family member B; Ig lambda-5; Immunoglobulin omega polypeptide; Immunoglobulin-related protein 14.1; CD antigen CD179b; IGLC1; Ig lambda-1 chain C regions; IGLC2; Ig
Accession No.	Swiss-Prot: P15814/P0CG04/P0CG05/P0CG06/P0CF74/A0M8Q6NCBI Gene ID: 3543
Uniprot	P15814
GeneID	3543;
SDS-PAGE MW	23kd
Concentration	1mg/ml
Formulation	Liquid in PBS containing 50% glycerol, 0.5% BSA and 0.02% sodium azide.
Storage	Store at -20°C/1 year

Application Details

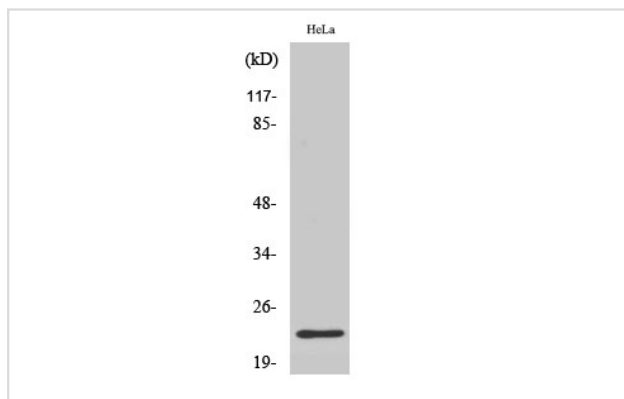
Western Blot: 1/500 - 1/2000.

ELISA: 1/10000.

Not yet tested in other applications.

Images

Western Blot analysis of K562 cells using CD179b Polyclonal Antibody



Note: This product is for in vitro research use only