

CD284 Polyclonal Antibody

Catalog No: #40697

Package Size: #40697-1 50ul #40697-2 100ul

Orders: order@signalwayantibody.comSupport: tech@signalwayantibody.com

Description

Product Name	CD284 Polyclonal Antibody
Host Species	Rabbit
Clonality	Polyclonal
Purification	The antibody was affinity-purified from rabbit antiserum by affinity-chromatography using epitope-specific immunogen.
Applications	WB IHC ELISA
Species Reactivity	Hu Ms
Specificity	CD284 Polyclonal Antibody detects endogenous levels of CD284 protein.
Immunogen Type	peptide
Immunogen Description	Synthesized peptide derived from the Internal region of human CD284.
Target Name	CD284
Other Names	TLR4; Toll-like receptor 4; hToll; CD antigen CD284
Accession No.	Swiss-Prot: O00206NCBI Gene ID: 7099
Uniprot	O00206
GeneID	7099;
SDS-PAGE MW	95kd
Concentration	1mg/ml
Formulation	Liquid in PBS containing 50% glycerol, 0.5% BSA and 0.02% sodium azide.
Storage	Store at -20°C/1 year

Application Details

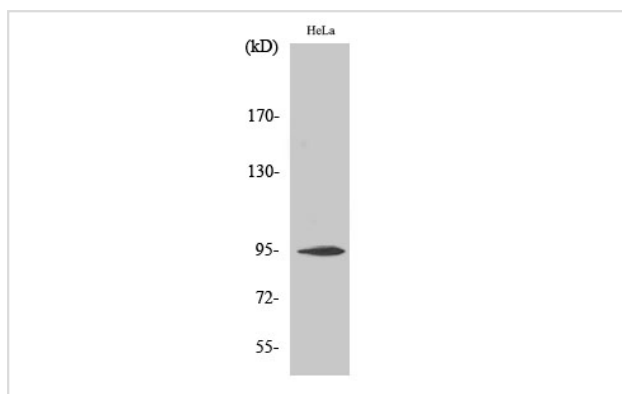
Western Blot: 1/500 - 1/2000.

Immunohistochemistry: 1/100 - 1/300.

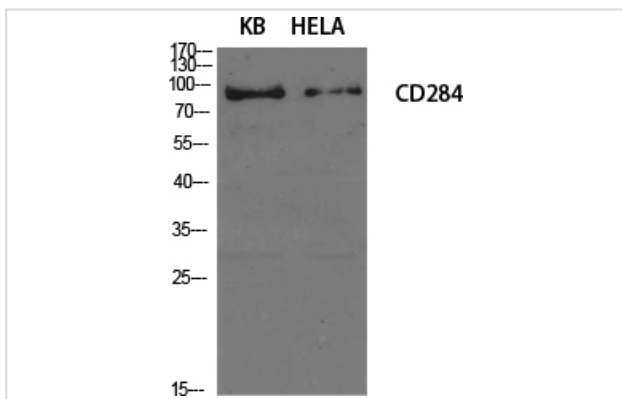
ELISA: 1/40000.

Not yet tested in other applications.

Images



Western Blot analysis of COLO205 cells using CD284 Polyclonal Antibody



Western Blot analysis of KB HELA cells using CD284 Polyclonal Antibody

Note: This product is for in vitro research use only