

CD2BP2 Polyclonal Antibody

Catalog No: #40698

Package Size: #40698-1 50ul #40698-2 100ul

Orders: order@signalwayantibody.comSupport: tech@signalwayantibody.com

Description

Product Name	CD2BP2 Polyclonal Antibody
Host Species	Rabbit
Clonality	Polyclonal
Purification	The antibody was affinity-purified from rabbit antiserum by affinity-chromatography using epitope-specific immunogen.
Applications	WB IHC ELISA
Species Reactivity	Hu Mk
Specificity	CD2BP2 Polyclonal Antibody detects endogenous levels of CD2BP2 protein.
Immunogen Type	peptide
Immunogen Description	Synthesized peptide derived from the Internal region of human CD2BP2.
Target Name	CD2BP2
Other Names	CD2BP2; KIAA1178; CD2 antigen cytoplasmic tail-binding protein 2; CD2 cytoplasmic domain-binding protein 2; CD2 tail-binding protein 2
Accession No.	Swiss-Prot: O95400NCBI Gene ID: 10421
Uniprot	O95400
GeneID	10421;
SDS-PAGE MW	50kd
Concentration	1mg/ml
Formulation	Liquid in PBS containing 50% glycerol, 0.5% BSA and 0.02% sodium azide.
Storage	Store at -20°C/1 year

Application Details

Western Blot: 1/500 - 1/2000.

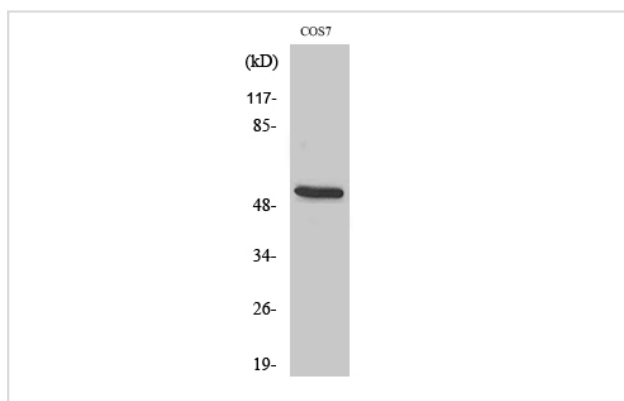
Immunohistochemistry: 1/100 - 1/300.

ELISA: 1/40000.

Not yet tested in other applications.

Images

Western Blot analysis of COS7 cells using CD2BP2 Polyclonal Antibody



Note: This product is for in vitro research use only