

CD32 Polyclonal Antibody

Catalog No: #40700

Package Size: #40700-1 50ul #40700-2 100ul

Orders: order@signalwayantibody.comSupport: tech@signalwayantibody.com

Description

Product Name	CD32 Polyclonal Antibody
Host Species	Rabbit
Clonality	Polyclonal
Purification	The antibody was affinity-purified from rabbit antiserum by affinity-chromatography using epitope-specific immunogen.
Applications	WB IHC ELISA IF(paraffin section)
Species Reactivity	Hu Ms Rt
Specificity	CD32 Polyclonal Antibody detects endogenous levels of CD32 protein.
Immunogen Description	Synthesized peptide derived from human CD32 around the non-phosphorylation site of Y292.
Target Name	CD32
Accession No.	Swiss-Prot: P31994?NCBI Gene ID: 2213
Uniprot	P31994
GeneID	2213;
SDS-PAGE MW	34kd
Concentration	1mg/ml
Formulation	Liquid in PBS containing 50% glycerol, 0.5% BSA and 0.02% sodium azide.
Storage	Store at -20°C/1 year

Application Details

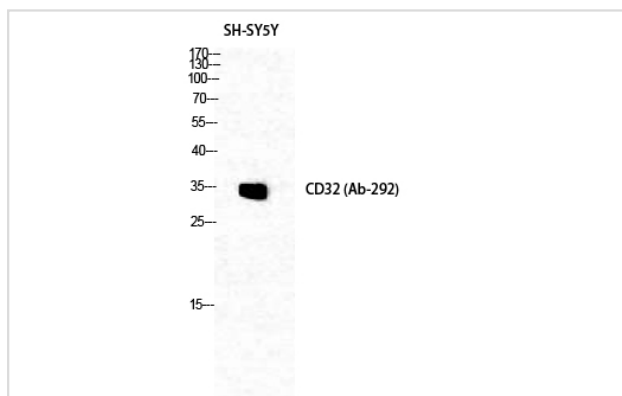
Western Blot: 1/500 - 1/2000.

Immunohistochemistry: 1/100 - 1/300.

ELISA: 1/5000.

Not yet tested in other applications.

Images



Western Blot analysis of SH-SY5Y cells using CD32 Polyclonal Antibody

Note: This product is for in vitro research use only