

## CD44 Polyclonal Antibody

Catalog No: #40702

Package Size: #40702-1 50ul #40702-2 100ul

Orders: [order@signalwayantibody.com](mailto:order@signalwayantibody.com)Support: [tech@signalwayantibody.com](mailto:tech@signalwayantibody.com)

## Description

Product Name	CD44 Polyclonal Antibody
Host Species	Rabbit
Clonality	Polyclonal
Purification	The antibody was affinity-purified from rabbit antiserum by affinity-chromatography using epitope-specific immunogen.
Applications	WB ELISA
Species Reactivity	Hu Ms Rt
Specificity	CD44 Polyclonal Antibody detects endogenous levels of CD44 protein.
Immunogen Type	peptide
Immunogen Description	Synthesized peptide derived from human CD44 around the non-phosphorylation site of S706.
Target Name	CD44
Other Names	CD44; LHR; MDU2; MDU3; MIC4; CD44 antigen; CDw44; Epican; Extracellular matrix receptor III; ECMR-III; GP90 lymphocyte homing/adhesion receptor; HUTCH-I; Heparan sulfate proteoglycan; Hermes antigen; Hyaluronate receptor; Phagocytic glycopr
Accession No.	Swiss-Prot: P16070NCBI Gene ID: 960
Uniprot	P16070
GeneID	960;
SDS-PAGE MW	90kd
Concentration	1mg/ml
Formulation	Liquid in PBS containing 50% glycerol, 0.5% BSA and 0.02% sodium azide.
Storage	Store at -20°C/1 year

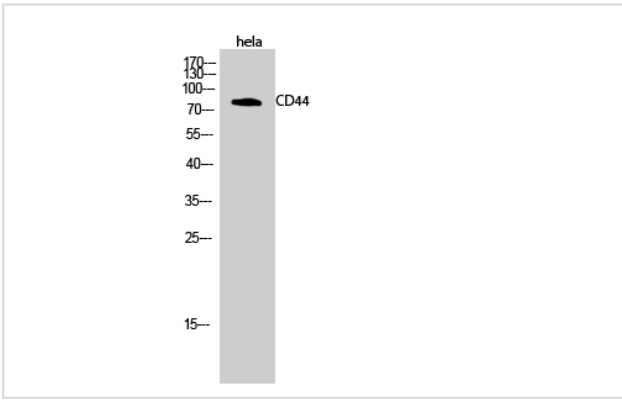
## Application Details

Western Blot: 1/500 - 1/2000.

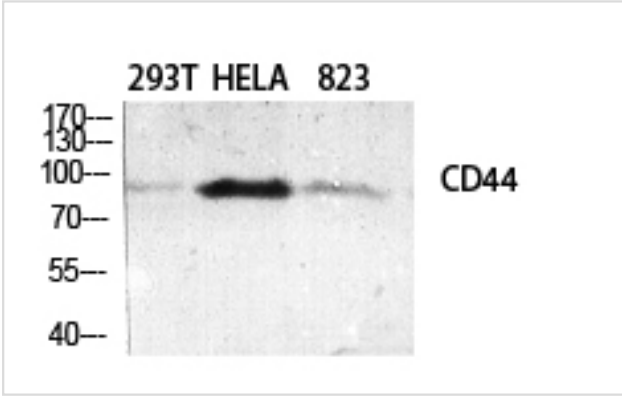
ELISA: 1/5000.

Not yet tested in other applications.

## Images



Western Blot analysis of hela cells using CD44 Polyclonal Antibody



Western Blot analysis of 293T HeLa 823 cells using CD44 Polyclonal Antibody

Note: This product is for in vitro research use only