

## Cdc2 Polyclonal Antibody

Catalog No: #40710

Package Size: #40710-1 50ul #40710-2 100ul

Orders: [order@signalwayantibody.com](mailto:order@signalwayantibody.com)Support: [tech@signalwayantibody.com](mailto:tech@signalwayantibody.com)

## Description

|                       |  |
|-----------------------|--|
| Product Name          | Cdc2 Polyclonal Antibody   |
| Host Species          | Rabbit   |
| Clonality             | Polyclonal   |
| Purification          | The antibody was affinity-purified from rabbit antiserum by affinity-chromatography using epitope-specific immunogen.  |
| Applications          | WB ELISA   |
| Species Reactivity    | Hu Ms Rt   |
| Specificity           | Cdc2 Polyclonal Antibody detects endogenous levels of Cdc2 protein.  |
| Immunogen Type        | peptide  |
| Immunogen Description | Synthesized peptide derived from human Cdc2 around the non-phosphorylation site of Y15.  |
| Target Name           | Cdc2   |
| Other Names           | CDK1; CDC2; CDC28A; CDKN1; P34CDC2; Cyclin-dependent kinase 1; CDK1; Cell division control protein 2 homolog; Cell division protein kinase 1; p34 protein kinase |
| Accession No.         | Swiss-Prot: P06493NCBI Gene ID: 983  |
| Uniprot               | P06493   |
| GeneID                | 983;   |
| SDS-PAGE MW           | 34kd   |
| Concentration         | 1mg/ml   |
| Formulation           | Liquid in PBS containing 50% glycerol, 0.5% BSA and 0.02% sodium azide.  |
| Storage               | Store at -20°C/1 year  |

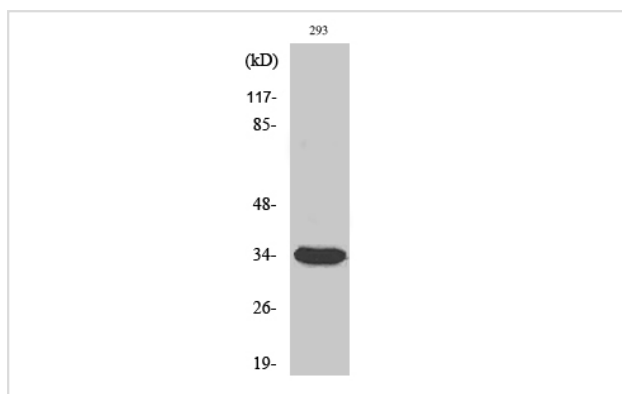
## Application Details

Western Blot: 1/500 - 1/2000.

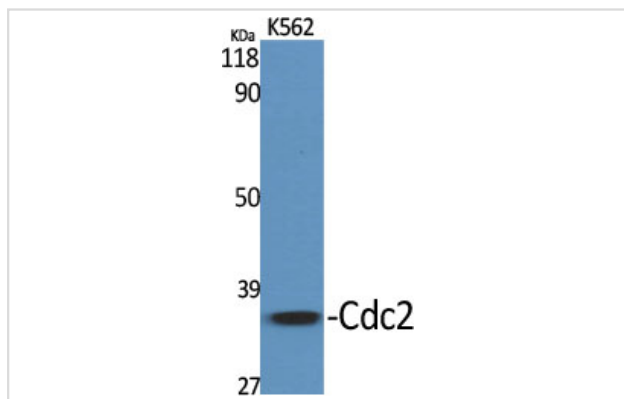
ELISA: 1/10000.

Not yet tested in other applications.

## Images



Western Blot analysis of 293 cells using Cdc2 Polyclonal Antibody



Western Blot analysis of K562 cells using Cdc2 Polyclonal Antibody

---

Note: This product is for in vitro research use only