

## Cdc20 Polyclonal Antibody

Catalog No: #40712

Package Size: #40712-1 50ul #40712-2 100ul

Orders: order@signalwayantibody.com

Support: tech@signalwayantibody.com

## Description

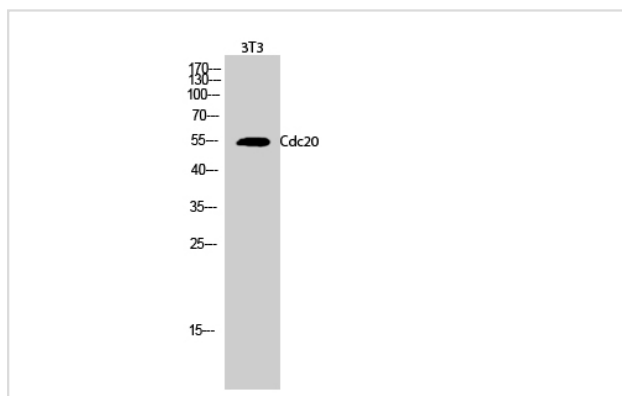
Product Name	Cdc20 Polyclonal Antibody
Host Species	Rabbit
Clonality	Polyclonal
Purification	The antibody was affinity-purified from rabbit antiserum by affinity-chromatography using epitope-specific immunogen.
Applications	WB IHC
Species Reactivity	Hu Ms Rt
Specificity	Cdc20 Polyclonal Antibody detects endogenous levels of Cdc20 protein.
Immunogen Type	peptide
Immunogen Description	Synthesized peptide derived from the Internal region of human Cdc20.
Target Name	Cdc20
Other Names	CDC20; Cell division cycle protein 20 homolog; p55CDC
Accession No.	Swiss-Prot: Q12834NCBI Gene ID: 991
Uniprot	Q12834
GeneID	991;
SDS-PAGE MW	50kd
Concentration	1mg/ml
Formulation	Liquid in PBS containing 50% glycerol, 0.5% BSA and 0.02% sodium azide.
Storage	Store at -20°C/1 year

## Application Details

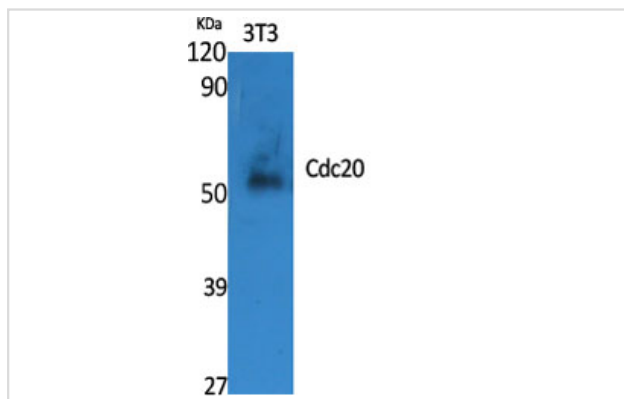
Western Blot: 1/500 - 1/2000.

Immunohistochemistry: 1/100 - 1/300.

## Images



Western Blot analysis of 3T3 cells using Cdc20 Polyclonal Antibody



Western Blot analysis of NIH-3T3 cells using Cdc20 Polyclonal Antibody

Note: This product is for in vitro research use only