

## Cdc42EP5 Polyclonal Antibody

Catalog No: #40716

Package Size: #40716-1 50ul #40716-2 100ul

Orders: order@signalwayantibody.com

Support: tech@signalwayantibody.com

## Description

Product Name	Cdc42EP5 Polyclonal Antibody
Host Species	Rabbit
Clonality	Polyclonal
Purification	The antibody was affinity-purified from rabbit antiserum by affinity-chromatography using epitope-specific immunogen.
Applications	WB IHC ELISA
Species Reactivity	Hu Ms
Specificity	Cdc42EP5 Polyclonal Antibody detects endogenous levels of Cdc42EP5 protein.
Immunogen Type	peptide
Immunogen Description	Synthesized peptide derived from the N-terminal region of human Cdc42EP5.
Target Name	Cdc42EP5
Other Names	CDC42EP5; BORG3; CEP5; Cdc42 effector protein 5; Binder of Rho GTPases 3
Accession No.	Swiss-Prot: Q6NZY7NCBI Gene ID: 148170
Uniprot	Q6NZY7
GeneID	148170;
SDS-PAGE MW	22kd
Concentration	1mg/ml
Formulation	Liquid in PBS containing 50% glycerol, 0.5% BSA and 0.02% sodium azide.
Storage	Store at -20°C/1 year

## Application Details

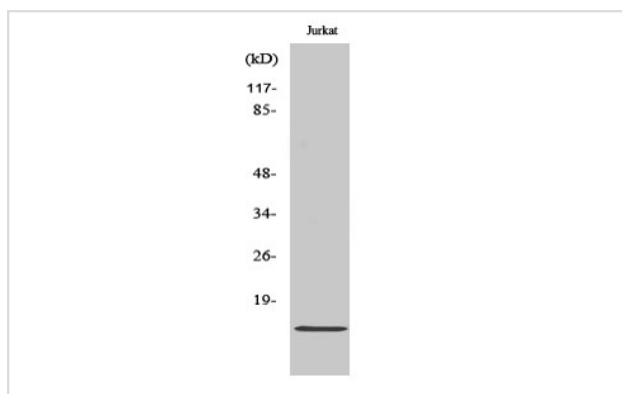
Western Blot: 1/500 - 1/2000.

Immunohistochemistry: 1/100 - 1/300.

ELISA: 1/40000.

Not yet tested in other applications.

## Images



Western Blot analysis of Jurkat cells using Cdc42EP5 Polyclonal Antibody

---

Note: This product is for in vitro research use only