

## FKHR(Phospho-Ser256) Antibody

Catalog No: #11115

Package Size: #11115-1 50ul #11115-2 100ul

Orders: [order@signalwayantibody.com](mailto:order@signalwayantibody.com)Support: [tech@signalwayantibody.com](mailto:tech@signalwayantibody.com)

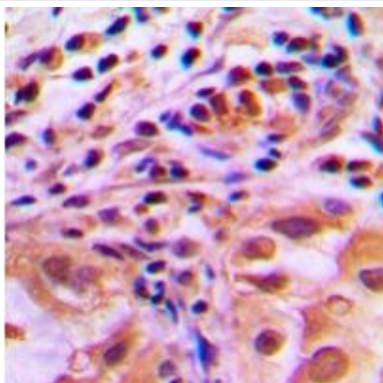
## Description

Product Name	FKHR(Phospho-Ser256) Antibody
Host Species	Rabbit
Clonality	Polyclonal
Purification	The antibody is from purified rabbit serum by affinity purification via sequential chromatography on phospho-peptide and non-phospho-peptide affinity columns.
Applications	WB, IH, IF/IC, IP
Species Reactivity	Human,Mouse,Rat
Specificity	The antibody detects endogenous level of FKHR only when phosphorylated at serine 256.
Immunogen Type	Peptide-KLH
Immunogen Description	A synthesized peptide derived from human FOXO1A around the phosphorylation site of Ser256.
Target Name	FKHR
Modification	Phospho
Other Names	FKHR; FOXO1;
Accession No.	Swiss-Prot: Q12778NCBI Protein: NP_002006.2
Uniprot	Q12778
GeneID	2308;
Calculated MW	82kDa
Concentration	1.0mg/ml
Formulation	Liquid in 0.42% Potassium phosphate, 0.87% Sodium chloride, pH 7.3, 30% glycerol,and 0.01% sodium azide
Storage	Store at -20°C for long term preservation (recommended). Store at 4°C for short term use.

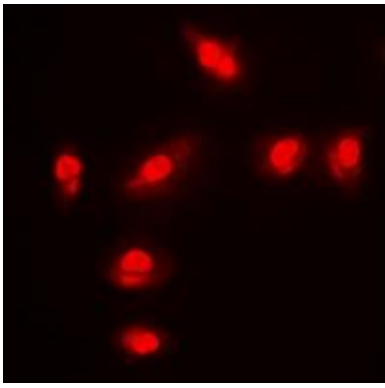
## Application Details

WB 1 $\mu$ g 500 - 1 $\mu$ g 1000), IHC 1 $\mu$ g 100 - 1 $\mu$ g 200, IF/IC 1 $\mu$ g 100 - 1 $\mu$ g 500, IP 1 $\mu$ g 10 - 1 $\mu$ g 100

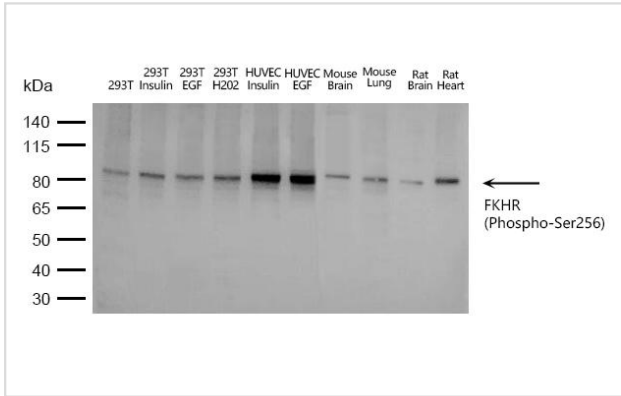
## Images



Immunohistochemical analysis of FOXO1 (Phospho-S256) staining in human lung cancer formalin fixed paraffinembedded tissue section.



Immunofluorescent analysis of FOXO1 (Phospho-S256) staining in MCF7 cells.



Western blot analysis of FKHR(Phospho-Ser256) expression in 293T,293T Insulin,293T EGF,293T H202,HUVEC Insulin,HUVEC EGF,Mouse Brain,Mouse Lung,Rat Brain,Rat Heart.

Note: This product is for in vitro research use only