

Cdk10 Polyclonal Antibody

Catalog No: #40718

Package Size: #40718-1 50ul #40718-2 100ul

Orders: order@signalwayantibody.com

Support: tech@signalwayantibody.com

Description

Product Name	Cdk10 Polyclonal Antibody
Host Species	Rabbit
Clonality	Polyclonal
Purification	The antibody was affinity-purified from rabbit antiserum by affinity-chromatography using epitope-specific immunogen.
Applications	WB IHC ELISA
Species Reactivity	Hu Ms Rt
Specificity	Cdk10 Polyclonal Antibody detects endogenous levels of Cdk10 protein.
Immunogen Type	peptide
Immunogen Description	Synthesized peptide derived from the Internal region of human Cdk10.
Target Name	Cdk10
Other Names	CDK10; Cyclin-dependent kinase 10; Cell division protein kinase 10; Serine/threonine-protein kinase PISSLRE
Accession No.	Swiss-Prot: Q15131NCBI Gene ID: 8558
Uniprot	Q15131
GeneID	8558;
SDS-PAGE MW	43kd
Concentration	1mg/ml
Formulation	Liquid in PBS containing 50% glycerol, 0.5% BSA and 0.02% sodium azide.
Storage	Store at -20°C/1 year

Application Details

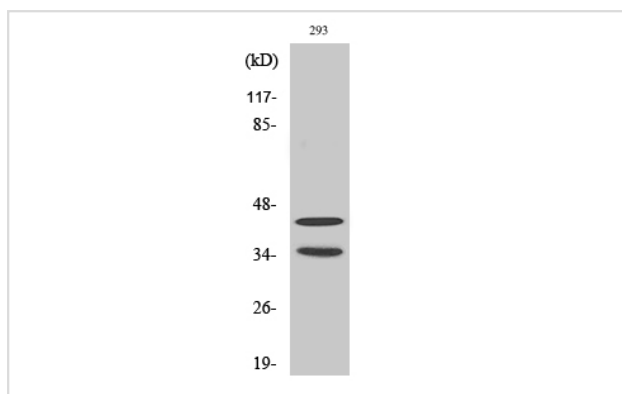
Western Blot: 1/500 - 1/2000.

Immunohistochemistry: 1/100 - 1/300.

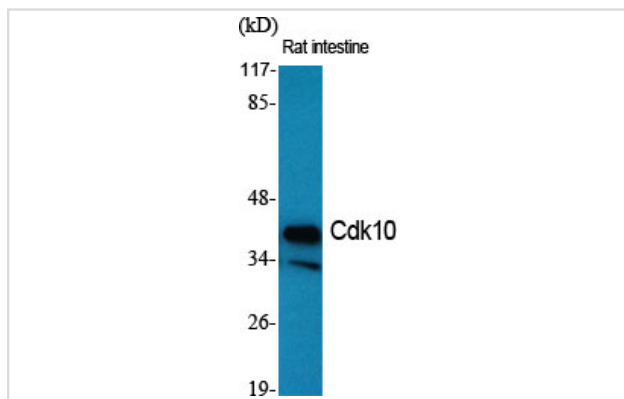
ELISA: 1/10000.

Not yet tested in other applications.

Images



Western Blot analysis of 293 cells using Cdk10 Polyclonal Antibody



Western Blot analysis of RAT-Intestine cells using Cdk10 Polyclonal Antibody

Note: This product is for in vitro research use only