

Cdk2 Polyclonal Antibody

Catalog No: #40719

Package Size: #40719-1 50ul #40719-2 100ul

Orders: order@signalwayantibody.com

Support: tech@signalwayantibody.com

Description

| | |
|-----------------------|---|
| Product Name | Cdk2 Polyclonal Antibody |
| Host Species | Rabbit |
| Clonality | Polyclonal |
| Purification | The antibody was affinity-purified from rabbit antiserum by affinity-chromatography using epitope-specific immunogen. |
| Applications | WB IHC IF ELISA |
| Species Reactivity | Hu Ms Rt |
| Specificity | Cdk2 Polyclonal Antibody detects endogenous levels of Cdk2 protein. |
| Immunogen Description | Synthesized peptide derived from the C-terminal region of human Cdk2. |
| Target Name | Cdk2 |
| Other Names | CDK2; CDKN2; Cyclin-dependent kinase 2; Cell division protein kinase 2; p33 protein kinase |
| Accession No. | Swiss-Prot: P24941NCBI Gene ID: 1017 |
| Uniprot | P24941 |
| GeneID | 1017; |
| SDS-PAGE MW | 32kd |
| Concentration | 1mg/ml |
| Formulation | Liquid in PBS containing 50% glycerol, 0.5% BSA and 0.02% sodium azide. |
| Storage | Store at -20°C/1 year |

Application Details

Western Blot: 1/500 - 1/2000.

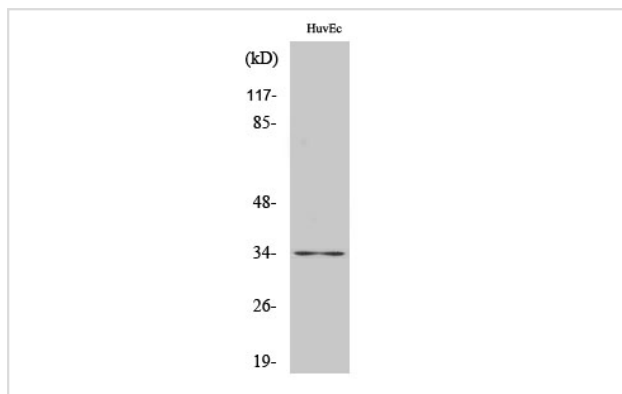
Immunohistochemistry: 1/100 - 1/300.

Immunofluorescence: 1/200 - 1/1000.

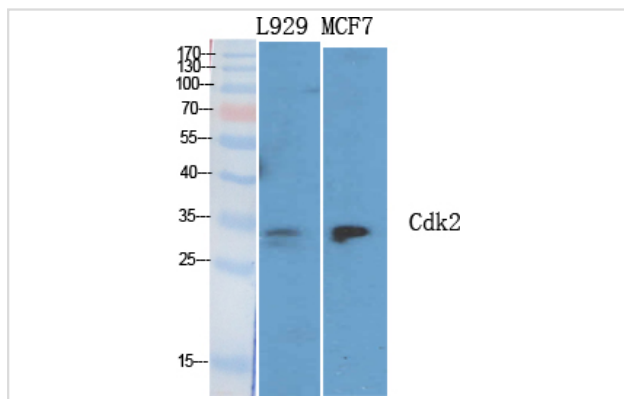
ELISA: 1/20000.

Not yet tested in other applications.

Images



Western Blot analysis of HuvEc cells using Cdk2 Polyclonal Antibody



Western Blot analysis of L929 MCF7 cells using Cdk2 Polyclonal Antibody

Note: This product is for in vitro research use only