

Cdk5 Polyclonal Antibody

Catalog No: #40721

Package Size: #40721-1 50ul #40721-2 100ul

Orders: order@signalwayantibody.comSupport: tech@signalwayantibody.com

Description

Product Name	Cdk5 Polyclonal Antibody
Host Species	Rabbit
Clonality	Polyclonal
Purification	The antibody was affinity-purified from rabbit antiserum by affinity-chromatography using epitope-specific immunogen.
Applications	WB IHC ELISA
Species Reactivity	Hu Ms Rt
Specificity	Cdk5 Polyclonal Antibody detects endogenous levels of Cdk5 protein.
Immunogen Type	peptide
Immunogen Description	Synthesized peptide derived from human Cdk5 around the non-phosphorylation site of Y15.
Target Name	Cdk5
Other Names	CDK5; CDKN5; Cyclin-dependent kinase 5; Cell division protein kinase 5; Serine/threonine-protein kinase PSSALRE; Tau protein kinase II catalytic subunit; TPKII catalytic subunit
Accession No.	Swiss-Prot: Q00535NCBI Gene ID: 1020
Uniprot	Q00535
GeneID	1020;
SDS-PAGE MW	33kd
Concentration	1mg/ml
Formulation	Liquid in PBS containing 50% glycerol, 0.5% BSA and 0.02% sodium azide.
Storage	Store at -20°C/1 year

Application Details

Western Blot: 1/500 - 1/2000.

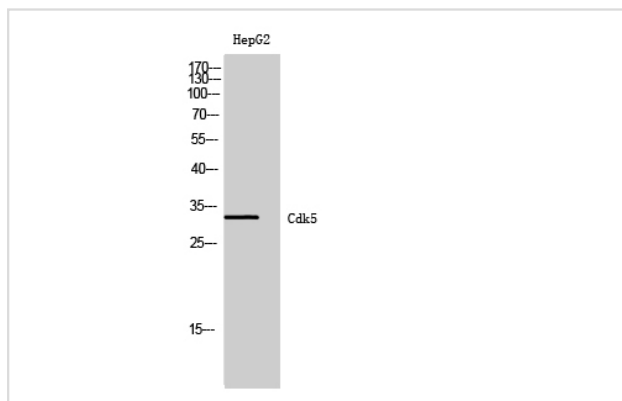
Immunohistochemistry: 1/100 - 1/300.

ELISA: 1/5000.

Not yet tested in other applications.

Images

Western Blot analysis of HepG2 cells using Cdk5 Polyclonal Antibody



Note: This product is for in vitro research use only