

Microtubule-associated proteins 1A/1B light chain 3B

Catalog No: #AP79359

Package Size: #AP79359-1 50ug #AP79359-2 100ug #AP79359-3 1mg

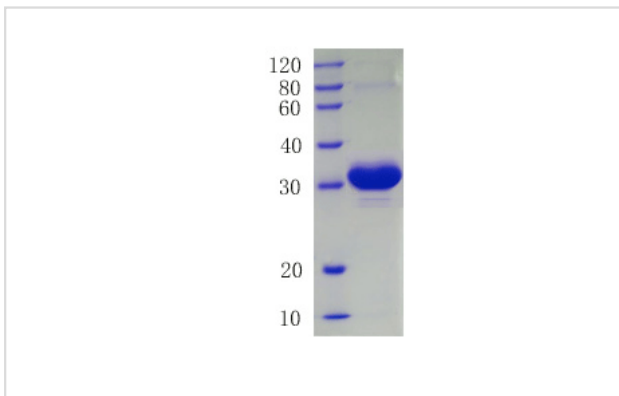
Orders: order@signalwayantibody.com

Support: tech@signalwayantibody.com

Description

Product Name	Microtubule-associated proteins 1A/1B light chain 3B
Brief Description	Recombinant Protein
Host Species	E.coli
Purification	Greater than 90% by SDS-PAGE
Species Reactivity	Human
Immunogen Description	1-125AA
Other Names	MAP1ALC3, Autophagy-related protein LC3 B, Autophagy-related ubiquitin-like modifier LC3 B, MAP1 light chain 3-like protein 2, MAP1A/MAP1B light chain 3 B, Microtubule-associated protein 1 light chain 3 beta, MAP1A/MAP1B LC3 B
Accession No.	Q9GZQ8 Gene name: MAP1LC3B
Uniprot	Q9GZQ8
GeneID	81631;
Calculated MW	13.75
Tag Info	His
Formulation	50mM NaH ₂ PO ₄ , 500mM NaCl Buffer with 500mM Imidazole, 10% glycerol (PH8.0)
Storage	Store at -20C. (Avoid repeated freezing and thawing.) Repeated freezing and thawing is not recommended. Store working aliquots at 4°C for up to one week.

Images



Background

Ubiquitin-like modifier involved in formation of autophagosomal vacuoles (autophagosomes). Plays a role in mitophagy which contributes to regulate mitochondrial quantity and quality by eliminating the mitochondria to a basal level to fulfill cellular energy requirements and preventing excess ROS production. Whereas LC3s are involved in elongation of the phagophore membrane, the GABARAP/GATE-16 subfamily is essential for a later stage in autophagosome maturation. Promotes primary ciliogenesis by removing OFD1 from centriolar satellites via the autophagic pathway.

References

Repeated freezing and thawing is not recommended. Store working aliquots at 4°C for up to one week.

Note: This product is for in vitro research use only