

Cdk8 Polyclonal Antibody

Catalog No: #40722

Package Size: #40722-1 50ul #40722-2 100ul

Orders: order@signalwayantibody.comSupport: tech@signalwayantibody.com

Description

Product Name	Cdk8 Polyclonal Antibody
Host Species	Rabbit
Clonality	Polyclonal
Purification	The antibody was affinity-purified from rabbit antiserum by affinity-chromatography using epitope-specific immunogen.
Applications	WB IHC ELISA
Species Reactivity	Hu Ms
Specificity	Cdk8 Polyclonal Antibody detects endogenous levels of Cdk8 protein.
Immunogen Type	peptide
Immunogen Description	Synthesized peptide derived from the N-terminal region of human Cdk8.
Target Name	Cdk8
Other Names	CDK8; Cyclin-dependent kinase 8; Cell division protein kinase 8; Mediator complex subunit CDK8; Mediator of RNA polymerase II transcription subunit CDK8; Protein kinase K35
Accession No.	Swiss-Prot: P49336NCBI Gene ID: 1024
Uniprot	P49336
GeneID	1024;
SDS-PAGE MW	53kd
Concentration	1mg/ml
Formulation	Liquid in PBS containing 50% glycerol, 0.5% BSA and 0.02% sodium azide.
Storage	Store at -20°C/1 year

Application Details

Western Blot: 1/500 - 1/2000.

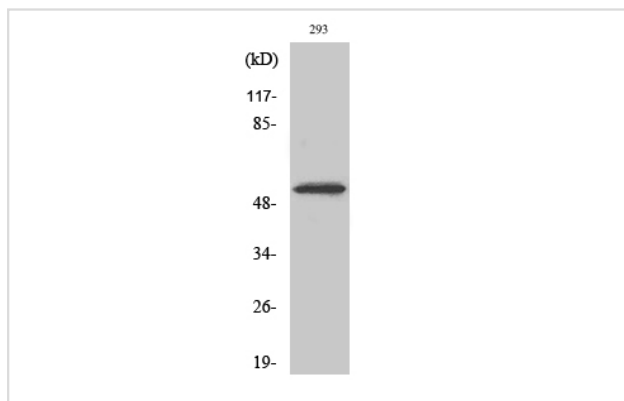
Immunohistochemistry: 1/100 - 1/300.

ELISA: 1/10000.

Not yet tested in other applications.

Images

Western Blot analysis of 293 cells using Cdk8 Polyclonal Antibody



Note: This product is for in vitro research use only