

CdkL4 Polyclonal Antibody

Catalog No: #40723

Package Size: #40723-1 50ul #40723-2 100ul

Orders: order@signalwayantibody.com

Support: tech@signalwayantibody.com

Description

Product Name	CdkL4 Polyclonal Antibody
Host Species	Rabbit
Clonality	Polyclonal
Purification	The antibody was affinity-purified from rabbit antiserum by affinity-chromatography using epitope-specific immunogen.
Applications	WB IHC IF
Species Reactivity	Hu
Specificity	CdkL4 Polyclonal Antibody detects endogenous levels of CdkL4 protein.
Immunogen Type	peptide
Immunogen Description	Synthesized peptide derived from the C-terminal region of human CdkL4.
Target Name	CdkL4
Other Names	CDKL4; Cyclin-dependent kinase-like 4
Accession No.	Swiss-Prot: Q5MAI5NCBI Gene ID: 344387
Uniprot	Q5MAI5
GeneID	344387;
SDS-PAGE MW	36kd
Concentration	1mg/ml
Formulation	Liquid in PBS containing 50% glycerol, 0.5% BSA and 0.02% sodium azide.
Storage	Store at -20°C/1 year

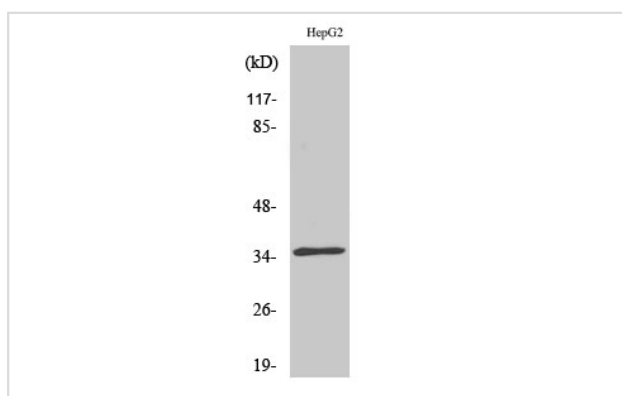
Application Details

Western Blot: 1/500 - 1/2000.

Immunohistochemistry: 1/100 - 1/300.

Immunofluorescence: 1/200 - 1/1000.

Images



Western Blot analysis of COLO205 cells using CdkL4 Polyclonal Antibody

Note: This product is for in vitro research use only