

CUX1 Polyclonal Antibody

Catalog No: #40725

Package Size: #40725-1 50ul #40725-2 100ul

Orders: order@signalwayantibody.comSupport: tech@signalwayantibody.com

Description

Product Name	CUX1 Polyclonal Antibody
Host Species	Rabbit
Clonality	Polyclonal
Purification	The antibody was affinity-purified from rabbit antiserum by affinity-chromatography using epitope-specific immunogen.
Applications	WB IHC IF ELISA
Species Reactivity	Hu Ms
Specificity	CUX1 Polyclonal Antibody detects endogenous levels of CUX1 protein.
Immunogen Type	peptide
Immunogen Description	Synthesized peptide derived from the N-terminal region of human CUX1.
Target Name	CUX1
Other Names	CUX1; CUTL1; Homeobox protein cut-like 1; CCAAT displacement protein; CDP; Homeobox protein cux-1; CUX1; CUTL1; Protein CASP
Accession No.	Swiss-Prot: P39880/Q13948NCBI Gene ID: 1523
Uniprot	Q13948
GeneID	1523;
SDS-PAGE MW	164kd
Concentration	1mg/ml
Formulation	Liquid in PBS containing 50% glycerol, 0.5% BSA and 0.02% sodium azide.
Storage	Store at -20°C/1 year

Application Details

Western Blot: 1/500 - 1/2000.

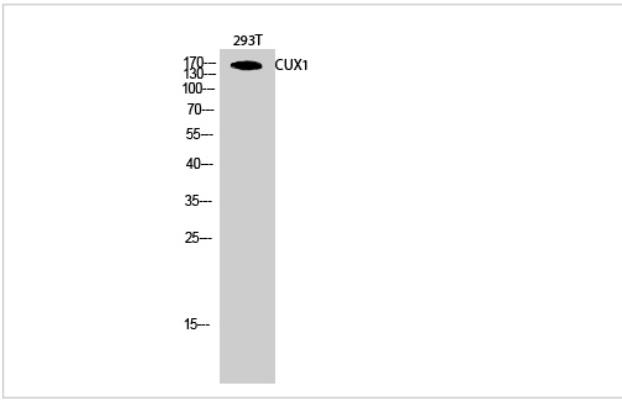
Immunohistochemistry: 1/100 - 1/300.

Immunofluorescence: 1/200 - 1/1000.

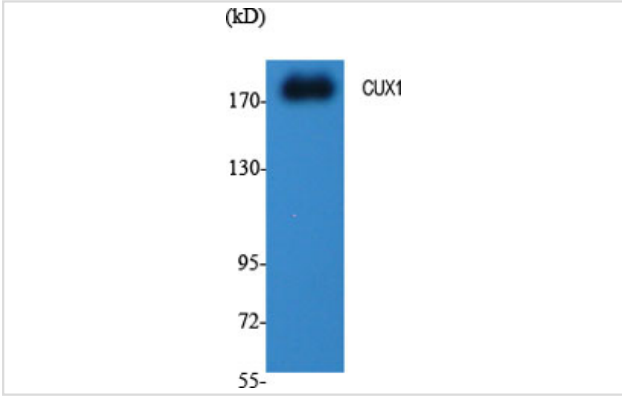
ELISA: 1/40000.

Not yet tested in other applications.

Images



Western Blot analysis of 293T cells using CUX1 Polyclonal Antibody



Western Blot analysis of various cells using CUX1 Polyclonal Antibody

Note: This product is for in vitro research use only