

CEP170 Polyclonal Antibody

Catalog No: #40727

Package Size: #40727-1 50ul #40727-2 100ul

Orders: order@signalwayantibody.comSupport: tech@signalwayantibody.com

Description

Product Name	CEP170 Polyclonal Antibody
Host Species	Rabbit
Clonality	Polyclonal
Purification	The antibody was affinity-purified from rabbit antiserum by affinity-chromatography using epitope-specific immunogen.
Applications	WB IHC ELISA
Species Reactivity	Hu
Specificity	CEP170 Polyclonal Antibody detects endogenous levels of CEP170 protein.
Immunogen Type	peptide
Immunogen Description	Synthesized peptide derived from the Internal region of human CEP170.
Target Name	CEP170
Other Names	CEP170; FAM68A; KAB; KIAA0470; Centrosomal protein of 170 kDa; Cep170; KARP-1-binding protein; KARP1-binding protein
Accession No.	Swiss-Prot: Q5SW79NCBI Gene ID: 9859
Uniprot	Q5SW79
GeneID	9859;
SDS-PAGE MW	160kd
Concentration	1mg/ml
Formulation	Liquid in PBS containing 50% glycerol, 0.5% BSA and 0.02% sodium azide.
Storage	Store at -20°C/1 year

Application Details

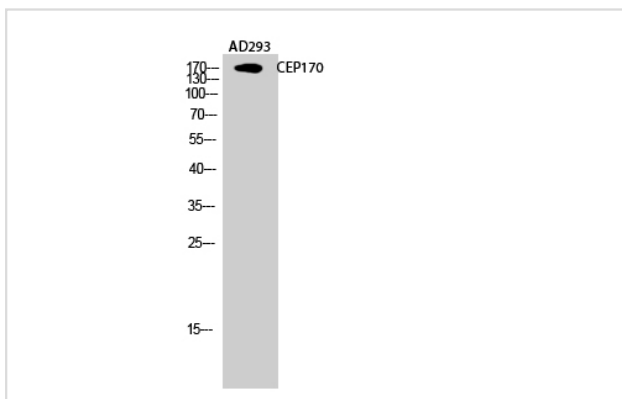
Western Blot: 1/500 - 1/2000.

Immunohistochemistry: 1/100 - 1/300.

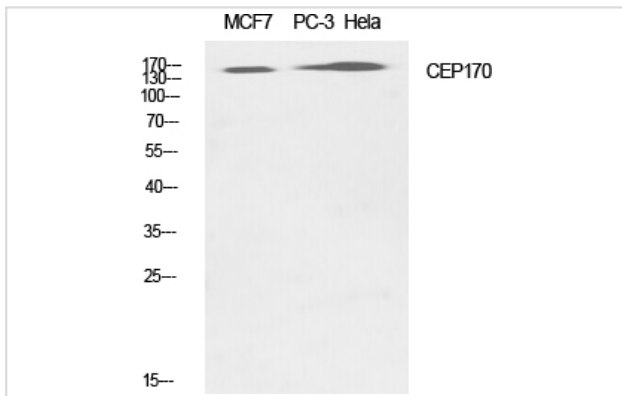
ELISA: 1/40000.

Not yet tested in other applications.

Images



Western Blot analysis of AD293 cells using CEP170 Polyclonal Antibody



Western Blot analysis of MCF7 PC-3 HeLa cells using CEP170 Polyclonal Antibody

Note: This product is for in vitro research use only