

c-Fms Polyclonal Antibody

Catalog No: #40729

Package Size: #40729-1 50ul #40729-2 100ul

Orders: order@signalwayantibody.comSupport: tech@signalwayantibody.com

Description

Product Name	c-Fms Polyclonal Antibody
Host Species	Rabbit
Clonality	Polyclonal
Purification	The antibody was affinity-purified from rabbit antiserum by affinity-chromatography using epitope-specific immunogen.
Applications	WB IHC IF ELISA
Species Reactivity	Hu Ms Rt
Specificity	c-Fms Polyclonal Antibody detects endogenous levels of c-Fms protein.
Immunogen Type	peptide
Immunogen Description	Synthesized peptide derived from human c-Fms around the non-phosphorylation site of Y561.
Target Name	c-Fms
Other Names	CSF1R; FMS; Macrophage colony-stimulating factor 1 receptor; CSF-1 receptor; CSF-1-R; CSF-1R; M-CSF-R; Proto-oncogene c-Fms; CD antigen CD115
Accession No.	Swiss-Prot: P07333NCBI Gene ID: 1436
Uniprot	P07333
GeneID	1436;
SDS-PAGE MW	107kd
Concentration	1mg/ml
Formulation	Liquid in PBS containing 50% glycerol, 0.5% BSA and 0.02% sodium azide.
Storage	Store at -20°C/1 year

Application Details

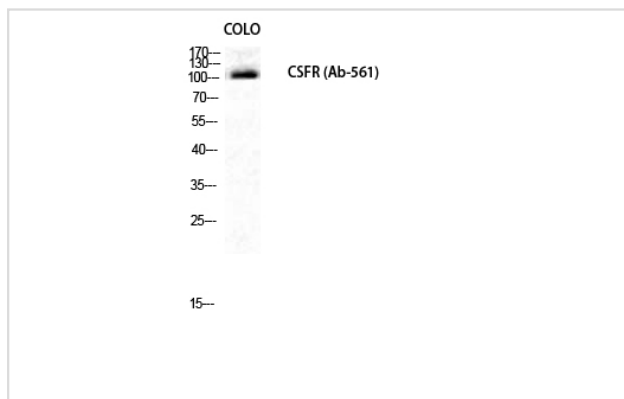
Western Blot: 1:500-2000

Immunohistochemistry: 1/100 - 1/300

Immunofluorescence: 1/200 - 1/1000

ELISA: 1/5000

Images



Western Blot analysis of COLO cells using c-Fms Polyclonal Antibody

Note: This product is for in vitro research use only