

## c-Fms Polyclonal Antibody

Catalog No: #40730

Package Size: #40730-1 50ul #40730-2 100ul

Orders: order@signalwayantibody.com

Support: tech@signalwayantibody.com

## Description

Product Name	c-Fms Polyclonal Antibody
Host Species	Rabbit
Clonality	Polyclonal
Purification	The antibody was affinity-purified from rabbit antiserum by affinity-chromatography using epitope-specific immunogen.
Applications	WB ELISA
Species Reactivity	Hu Ms Rt
Specificity	c-Fms Polyclonal Antibody detects endogenous levels of c-Fms protein.
Immunogen Type	peptide
Immunogen Description	Synthesized peptide derived from human c-Fms around the non-phosphorylation site of Y809.
Target Name	c-Fms
Other Names	CSF1R; FMS; Macrophage colony-stimulating factor 1 receptor; CSF-1 receptor; CSF-1-R; CSF-1R; M-CSF-R; Proto-oncogene c-Fms; CD antigen CD115
Accession No.	Swiss-Prot: P07333NCBI Gene ID: 1436
Uniprot	P07333
GeneID	1436;
SDS-PAGE MW	108kd
Concentration	1mg/ml
Formulation	Liquid in PBS containing 50% glycerol, 0.5% BSA and 0.02% sodium azide.
Storage	Store at -20°C/1 year

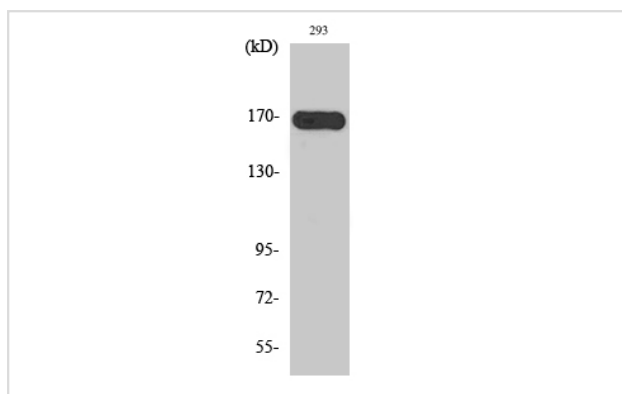
## Application Details

Western Blot: 1/500 - 1/2000.

ELISA: 1/10000.

Not yet tested in other applications.

## Images



Western Blot analysis of 293 cells using c-Fms Polyclonal Antibody

---

Note: This product is for in vitro research use only