

c-Fos Polyclonal Antibody

Catalog No: #40731

Package Size: #40731-1 50ul #40731-2 100ul

Orders: order@signalwayantibody.comSupport: tech@signalwayantibody.com

Description

Product Name	c-Fos Polyclonal Antibody
Host Species	Rabbit
Clonality	Polyclonal
Purification	The antibody was affinity-purified from rabbit antiserum by affinity-chromatography using epitope-specific immunogen.
Applications	WB IHC ELISA
Species Reactivity	Hu Ms Rt
Specificity	c-Fos Polyclonal Antibody detects endogenous levels of c-Fos protein.
Immunogen Type	peptide
Immunogen Description	Synthesized peptide derived from the N-terminal region of human c-Fos.
Target Name	c-Fos
Other Names	FOS; G0S7; Proto-oncogene c-Fos; Cellular oncogene fos; G0/G1 switch regulatory protein 7
Accession No.	Swiss-Prot: P01100NCBI Gene ID: 2353
Uniprot	P01100
GeneID	2353;
SDS-PAGE MW	62kd
Concentration	1mg/ml
Formulation	Liquid in PBS containing 50% glycerol, 0.5% BSA and 0.02% sodium azide.
Storage	Store at -20°C/1 year

Application Details

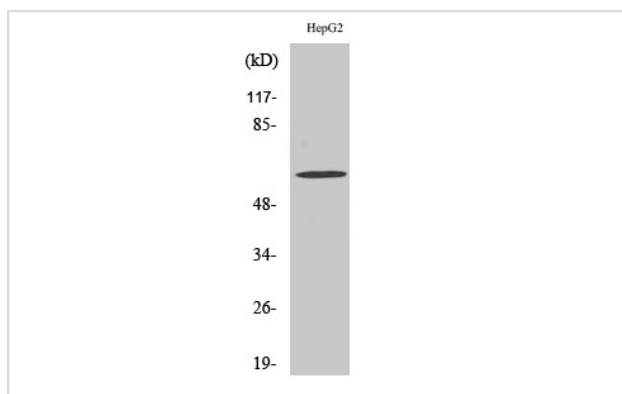
Western Blot: 1/500 - 1/2000.

Immunohistochemistry: 1/100 - 1/300.

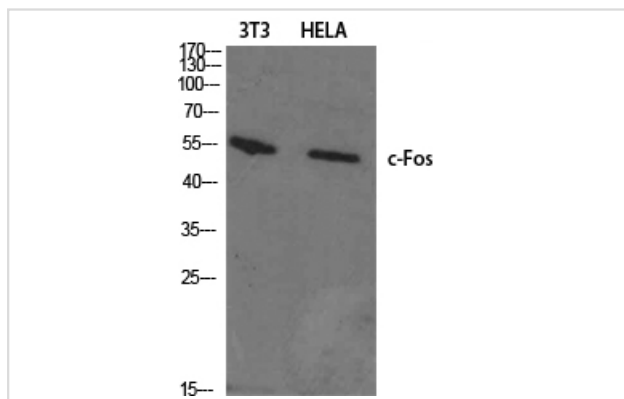
ELISA: 1/10000.

Not yet tested in other applications.

Images



Western Blot analysis of HepG2 cells using c-Fos Polyclonal Antibody



Western Blot analysis of NIH-3T3 HELA cells using c-Fos Polyclonal Antibody

Note: This product is for in vitro research use only