

CFTR Polyclonal Antibody

Catalog No: #40734

Package Size: #40734-1 50ul #40734-2 100ul

Orders: order@signalwayantibody.comSupport: tech@signalwayantibody.com

Description

Product Name	CFTR Polyclonal Antibody
Host Species	Rabbit
Clonality	Polyclonal
Purification	The antibody was affinity-purified from rabbit antiserum by affinity-chromatography using epitope-specific immunogen.
Applications	WB IHC ELISA
Species Reactivity	Hu Ms Rt
Specificity	CFTR Polyclonal Antibody detects endogenous levels of CFTR protein.
Immunogen Type	peptide
Immunogen Description	Synthesized peptide derived from human CFTR around the non-phosphorylation site of S737.
Target Name	CFTR
Other Names	CFTR; ABCC7; Cystic fibrosis transmembrane conductance regulator; CFTR; ATP-binding cassette sub-family C member 7; Channel conductance-controlling ATPase; cAMP-dependent chloride channel
Accession No.	Swiss-Prot: P13569NCBI Gene ID: 1080
Uniprot	P13569
GeneID	1080;
SDS-PAGE MW	168kd
Concentration	1mg/ml
Formulation	Liquid in PBS containing 50% glycerol, 0.5% BSA and 0.02% sodium azide.
Storage	Store at -20°C/1 year

Application Details

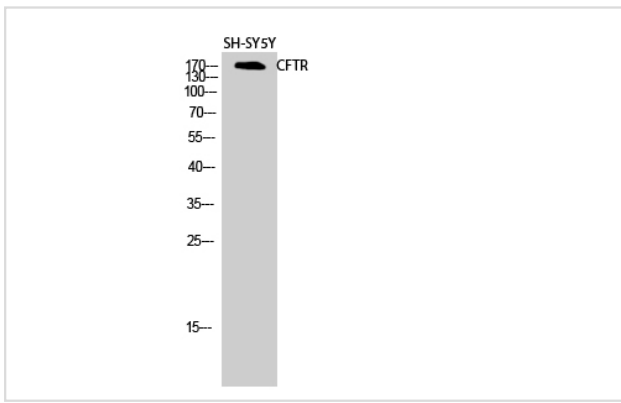
Western Blot: 1/500 - 1/2000.

Immunohistochemistry: 1/100 - 1/300.

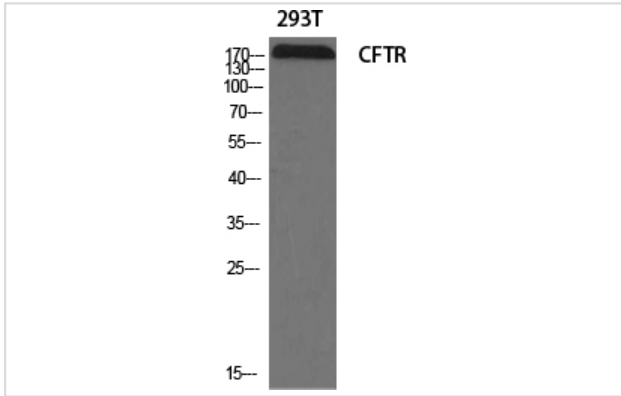
ELISA: 1/5000.

Not yet tested in other applications.

Images



Western Blot analysis of SH-SY5Y cells using CFTR Polyclonal Antibody



Western Blot analysis of 293T cells using CFTR Polyclonal Antibody

Note: This product is for in vitro research use only