

ChemR23 Polyclonal Antibody

Catalog No: #40737

Package Size: #40737-1 50ul #40737-2 100ul

Orders: order@signalwayantibody.comSupport: tech@signalwayantibody.com

Description

Product Name	ChemR23 Polyclonal Antibody
Host Species	Rabbit
Clonality	Polyclonal
Purification	The antibody was affinity-purified from rabbit antiserum by affinity-chromatography using epitope-specific immunogen.
Applications	WB IHC IF
Species Reactivity	Hu Ms Rt
Specificity	ChemR23 Polyclonal Antibody detects endogenous levels of ChemR23 protein.
Immunogen Description	Synthesized peptide derived from the Internal region of human ChemR23.
Target Name	ChemR23
Other Names	CMKLR1; CHEMR23; DEZ; Chemokine-like receptor 1; G-protein coupled receptor ChemR23; G-protein coupled receptor DEZ
Accession No.	Swiss-Prot: Q99788NCBI Gene ID: 1240
Uniprot	Q99788
GeneID	1240;
SDS-PAGE MW	42kd
Concentration	1mg/ml
Formulation	Liquid in PBS containing 50% glycerol, 0.5% BSA and 0.02% sodium azide.
Storage	Store at -20°C/1 year

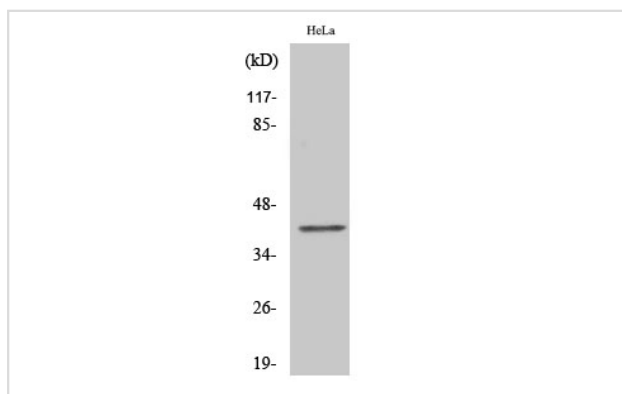
Application Details

Western Blot: 1/500 - 1/2000.

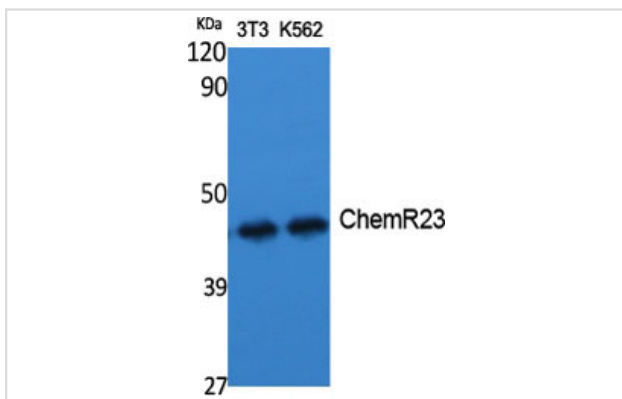
Immunohistochemistry: 1/100 - 1/300.

Immunofluorescence: 1/200 - 1/1000.

Images



Western Blot analysis of HeLa cells using ChemR23 Polyclonal Antibody



Western Blot analysis of NIH-3T3 K562 cells using ChemR23 Polyclonal Antibody

Note: This product is for in vitro research use only