

## Chk1 Polyclonal Antibody

Catalog No: #40740

Package Size: #40740-1 50ul #40740-2 100ul

Orders: [order@signalwayantibody.com](mailto:order@signalwayantibody.com)Support: [tech@signalwayantibody.com](mailto:tech@signalwayantibody.com)

## Description

Product Name	Chk1 Polyclonal Antibody
Host Species	Rabbit
Clonality	Polyclonal
Purification	The antibody was affinity-purified from rabbit antiserum by affinity-chromatography using epitope-specific immunogen.
Applications	WB IHC ELISA
Species Reactivity	Hu Ms Rt
Specificity	Chk1 Polyclonal Antibody detects endogenous levels of Chk1 protein.
Immunogen Type	peptide
Immunogen Description	Synthesized peptide derived from human Chk1 around the non-phosphorylation site of S345.
Target Name	Chk1
Other Names	CHEK1; CHK1; Serine/threonine-protein kinase Chk1; CHK1 checkpoint homolog; Cell cycle checkpoint kinase; Checkpoint kinase-1
Accession No.	Swiss-Prot: O14757NCBI Gene ID: 1111
Uniprot	O14757
GeneID	1111;
SDS-PAGE MW	56kd
Concentration	1mg/ml
Formulation	Liquid in PBS containing 50% glycerol, 0.5% BSA and 0.02% sodium azide.
Storage	Store at -20°C/1 year

## Application Details

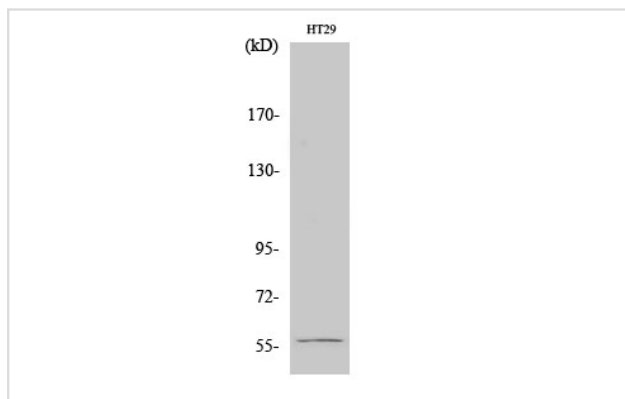
Western Blot: 1/500 - 1/2000.

Immunohistochemistry: 1/100 - 1/300.

ELISA: 1/40000.

Not yet tested in other applications.

## Images



Western Blot analysis of HT29 cells using Chk1 Polyclonal Antibody

---

Note: This product is for in vitro research use only