

Domperidone

Catalog No: #S0082

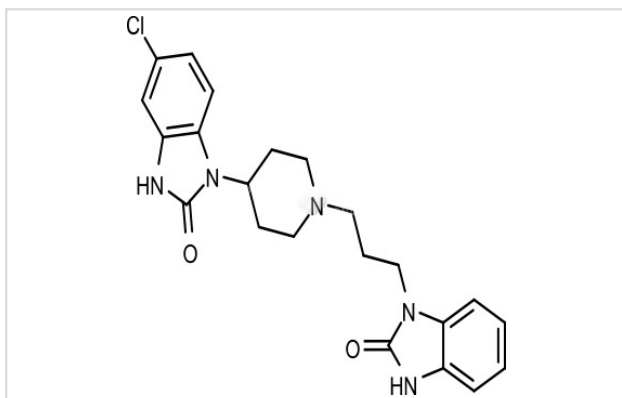
Orders: order@signalwayantibody.com

Support: tech@signalwayantibody.com

Description

Product Name	Domperidone
Brief Description	Inhibitors
Purification	99.00%
Target Name	Dopamine Receptor antagonist
Calculated MW	425.92
Formulation	C22H24ClN5O2
Storage	3 years -20°C powder; 2 years -80°C in solvent;

Images



Product Description

Research Area: Metabolism system
 SMILES: C1C=CC2=C(C=C1)N(C1CCN(CCCN3C(=O)NC4=CC=CC=C34)C(=O)N2)
 Pathways: GPCR/G Protein; Neuroscience
 Receptor: D2; D3
 Boling pt: Melting pt: 240-244°C
 Solubility: Ethanol: 1 mg/mL (2.34 mM); DMSO: 48 mg/mL (112.69 mM)
 Appearance: White Powder
 Remark: For obtaining a higher solubility, please warm the tube at 37 °C and shake it in the ultrasonic bath for a while. Stock solution can be stored below -20 °C for several months.

References

1. Freedman SB, et al. J Pharmacol Exp Ther. 1994 Jan; 268(1):417-26.

Note: This product is for in vitro research use only