

## Eplerenone

Catalog No: #S0083

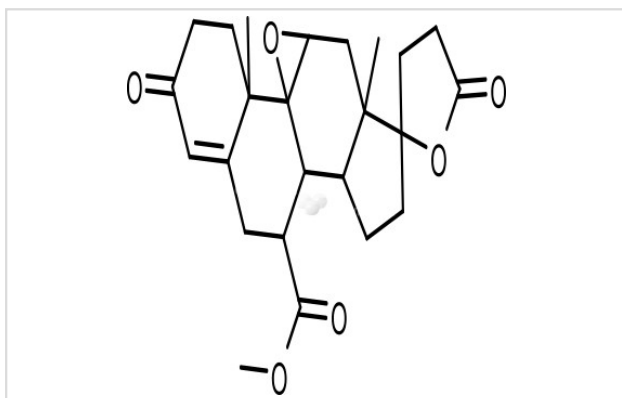
Orders: order@signalwayantibody.com

Support: tech@signalwayantibody.com

## Description

Product Name	Eplerenone
Brief Description	Inhibitors
Purification	98.00%
Target Name	Glucocorticoid Receptor inhibitor
Calculated MW	414.49
Formulation	C24H30O6
Storage	3 years -20°C powder; 2 years -80°C in solvent;

## Images



## Product Description

Research Area: Cardiovascular

System SMILES: C[C@]12CCC(=O)C=C1C[C@H]([C@@H]3[C@]24[C@H](O4)C[C@]5([C@H]3CC[C@@]56CCC(=O)O6)C(=O)OC  
 Pathways: Endocrinology/Hormones Receptor: Mineralocorticoid Receptor Boiling pt: 597.9°C Melting pt: 241-243°C Solubility: Ethanol:

## References

1. Keidar S, et al. J Cardiovasc Pharmacol, 2003, 41(6), 955-963.

Note: This product is for in vitro research use only