

Choriogonadotropin β Polyclonal Antibody

Catalog No: #40745

Package Size: #40745-1 50ul #40745-2 100ul

Orders: order@signalwayantibody.comSupport: tech@signalwayantibody.com

Description

| | |
|-----------------------|---|
| Product Name | Choriogonadotropin β Polyclonal Antibody |
| Host Species | Rabbit |
| Clonality | Polyclonal |
| Purification | The antibody was affinity-purified from rabbit antiserum by affinity-chromatography using epitope-specific immunogen. |
| Applications | WB IHC ELISA |
| Species Reactivity | Hu |
| Specificity | Choriogonadotropin β Polyclonal Antibody detects endogenous levels of Choriogonadotropin β protein. |
| Immunogen Type | peptide |
| Immunogen Description | Synthesized peptide derived from the C-terminal region of human Choriogonadotropin β . |
| Target Name | Choriogonadotropin β |
| Other Names | CGB; CGB3; CGB5; CGB7; CGB8; Choriogonadotropin subunit beta; CG-beta; Chorionic gonadotrophin chain beta |
| Accession No. | Swiss-Prot: P01233NCBI Gene ID: 1082/93659/94027/94115 |
| Uniprot | P01233 |
| GeneID | 1082;93659;94027;94115; |
| SDS-PAGE MW | 20kd |
| Concentration | 1mg/ml |
| Formulation | Liquid in PBS containing 50% glycerol, 0.5% BSA and 0.02% sodium azide. |
| Storage | Store at -20°C/1 year |

Application Details

Western Blot: 1/500 - 1/2000.

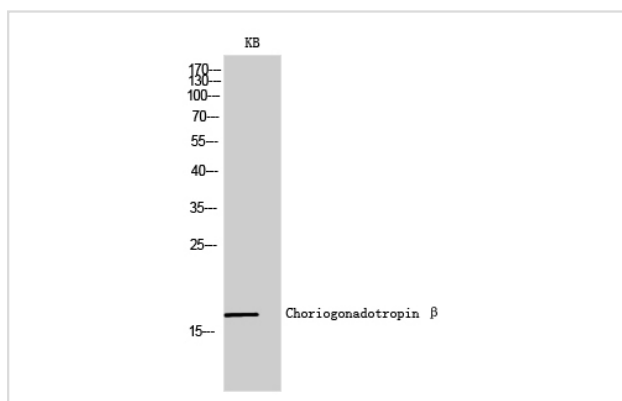
Immunohistochemistry: 1/100 - 1/300.

ELISA: 1/10000.

Not yet tested in other applications.

Images

Western Blot analysis of KB cells using Choriogonadotropin β Polyclonal Antibody



Note: This product is for in vitro research use only