

Solifenacin succinate

Catalog No: #S0111

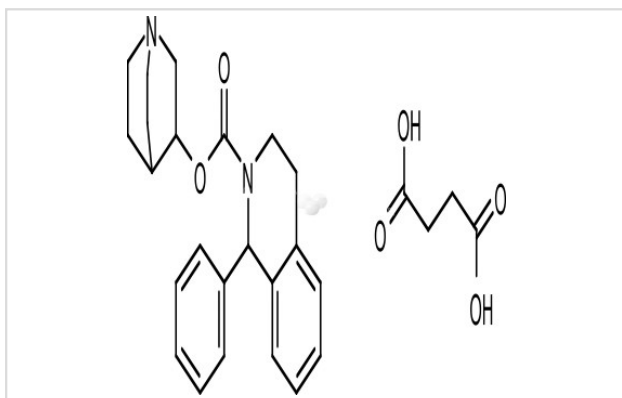
Orders: order@signalwayantibody.com

Support: tech@signalwayantibody.com

Description

Product Name	Solifenacin succinate
Brief Description	Inhibitors
Purification	98.00%
Target Name	AChR antagonist
Calculated MW	480.56
Formulation	C ₂₃ H ₂₆ N ₂ O ₂ C ₄ H ₆ O ₄
Storage	3 years -20°C powder; 2 years -80°C in solvent;

Images



Product Description

Research Area: Metabolism

system SMILES: C₁CN₂CCCC₁[C@H](C₂)OC(=O)N₃CCCC₄=CC=CC=C₄[C@@H]₃C₅=CC=CC=C₅.C(CC(=O)O)C(=O)O

Pathways: Neuroscience Receptor: mAChR

Boling pt: 505.5°C

Melting pt: Solubility: Ethanol: 5 mg/mL (10.4 mM); Water: 96 mg/mL (199.77 mM); DMSO: 3 mg/mL (6.24 mM)

Appearance: White Powder

Remark: For obtaining a higher solubility, please warm the tube at 37 °C and shake it in the ultrasonic bath for a while.

Stock solution can be stored below -20 °C for several month.

References

1. Sinha S, et al. Br J Pharmacol. 2010 Jul;160(5):1119-27.

Note: This product is for in vitro research use only