

## Claudin-19 Polyclonal Antibody

Catalog No: #40748

Package Size: #40748-1 50ul #40748-2 100ul

Orders: [order@signalwayantibody.com](mailto:order@signalwayantibody.com)Support: [tech@signalwayantibody.com](mailto:tech@signalwayantibody.com)

## Description

Product Name	Claudin-19 Polyclonal Antibody
Host Species	Rabbit
Clonality	Polyclonal
Purification	The antibody was affinity-purified from rabbit antiserum by affinity-chromatography using epitope-specific immunogen.
Applications	WB ELISA
Species Reactivity	Hu Rt
Specificity	Claudin-19 Polyclonal Antibody detects endogenous levels of Claudin-19 protein.
Immunogen Type	peptide
Immunogen Description	Synthesized peptide derived from the Internal region of human Claudin-19.
Target Name	Claudin-19
Other Names	CLDN19; Claudin-19
Accession No.	Swiss-Prot: Q8N6F1NCBI Gene ID: 149461
Uniprot	Q8N6F1
GeneID	149461;
SDS-PAGE MW	23kd
Concentration	1mg/ml
Formulation	Liquid in PBS containing 50% glycerol, 0.5% BSA and 0.02% sodium azide.
Storage	Store at -20°C/1 year

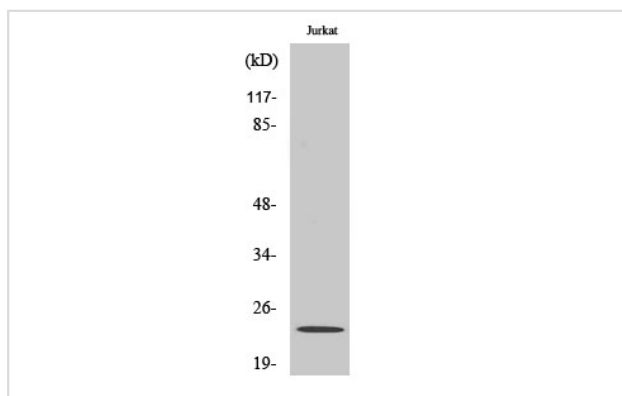
## Application Details

Western Blot: 1/500 - 1/2000.

ELISA: 1/10000.

Not yet tested in other applications.

## Images



Western Blot analysis of HepG2 cells using Claudin-19 Polyclonal Antibody

---

Note: This product is for in vitro research use only