

## Claudin-4 Polyclonal Antibody

Catalog No: #40752

Package Size: #40752-1 50ul #40752-2 100ul

Orders: order@signalwayantibody.com

Support: tech@signalwayantibody.com

## Description

Product Name	Claudin-4 Polyclonal Antibody
Host Species	Rabbit
Clonality	Polyclonal
Purification	The antibody was affinity-purified from rabbit antiserum by affinity-chromatography using epitope-specific immunogen.
Applications	WB IHC ELISA
Species Reactivity	Human,Mouse,Rat
Specificity	Claudin-4 Polyclonal Antibody detects endogenous levels of Claudin-4 protein.
Immunogen Description	Synthesized peptide derived from human Claudin-4 around the non-phosphorylation site of Y208.
Target Name	Claudin-4
Other Names	CLDN4; CPER; CPETR1; WBSCR8; Claudin-4; Clostridium perfringens enterotoxin receptor; CPE-R; CPE-receptor; Williams-Beuren syndrome chromosomal region 8 protein
Accession No.	Swiss-Prot: O14493NCBI Gene ID: 1364
Uniprot	O14493
GeneID	1364;
SDS-PAGE MW	28kd
Concentration	1mg/ml
Formulation	Liquid in PBS containing 50% glycerol, 0.5% BSA and 0.02% sodium azide.
Storage	Store at -20°C/1 year

## Application Details

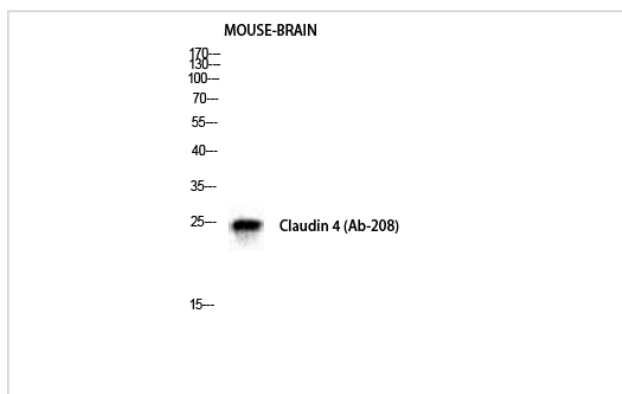
Western Blot: 1/500 - 1/2000.

Immunohistochemistry: 1/100 - 1/300.

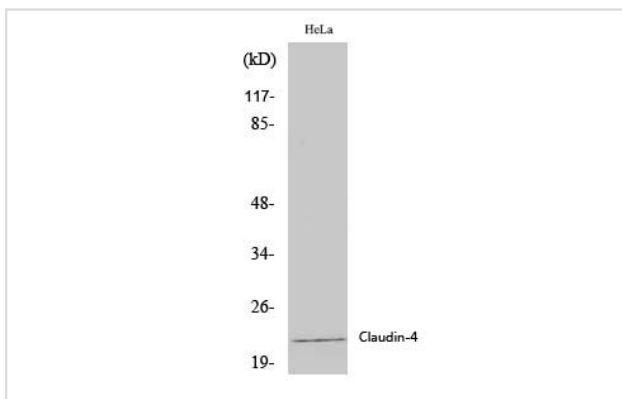
ELISA: 1/5000.

Not yet tested in other applications.

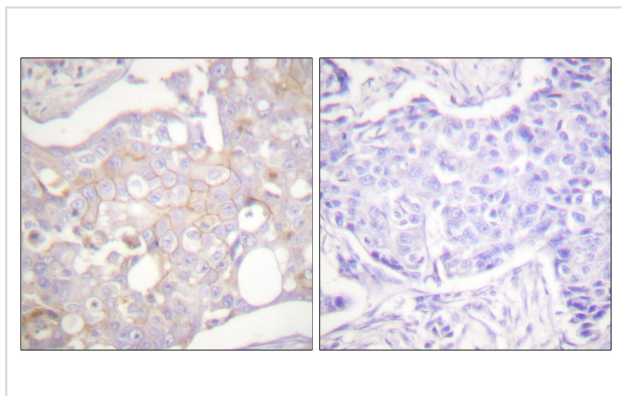
## Images



Western Blot analysis of mouse-BRAIN cells using Claudin-4 Polyclonal Antibody



Western Blot analysis of various cells using Claudin-4 Polyclonal Antibody.



Immunohistochemistry analysis of paraffin-embedded human breast carcinoma tissue, using Claudin 4 Antibody. The picture on the right is blocked with the synthesized peptide.

---

Note: This product is for in vitro research use only