

Claudin-4 Polyclonal Antibody

Catalog No: #40753

Package Size: #40753-1 50ul #40753-2 100ul

Orders: order@signalwayantibody.comSupport: tech@signalwayantibody.com

Description

| | |
|-----------------------|--|
| Product Name | Claudin-4 Polyclonal Antibody |
| Host Species | Rabbit |
| Clonality | Polyclonal |
| Purification | The antibody was affinity-purified from rabbit antiserum by affinity-chromatography using epitope-specific immunogen. |
| Applications | WB IHC IF ELISA |
| Species Reactivity | Hu Ms Rt |
| Specificity | Claudin-4 Polyclonal Antibody detects endogenous levels of Claudin-4 protein. |
| Immunogen Type | peptide |
| Immunogen Description | Synthesized peptide derived from the C-terminal region of human Claudin-4. |
| Target Name | Claudin-4 |
| Other Names | CLDN4; CPER; CPETR1; WBSCR8; Claudin-4; Clostridium perfringens enterotoxin receptor; CPE-R; CPE-receptor; Williams-Beuren syndrome chromosomal region 8 protein |
| Accession No. | Swiss-Prot: O14493NCBI Gene ID: 1364 |
| Uniprot | O14493 |
| GeneID | 1364; |
| SDS-PAGE MW | 22kd |
| Concentration | 1mg/ml |
| Formulation | Liquid in PBS containing 50% glycerol, 0.5% BSA and 0.02% sodium azide. |
| Storage | Store at -20°C/1 year |

Application Details

Western Blot: 1/500 - 1/2000.

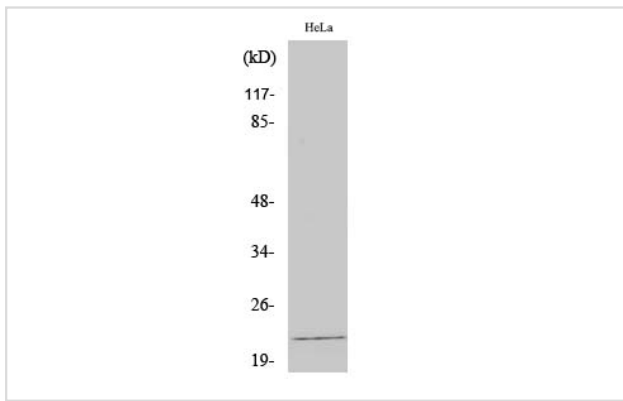
Immunohistochemistry: 1/100 - 1/300.

Immunofluorescence: 1/200 - 1/1000.

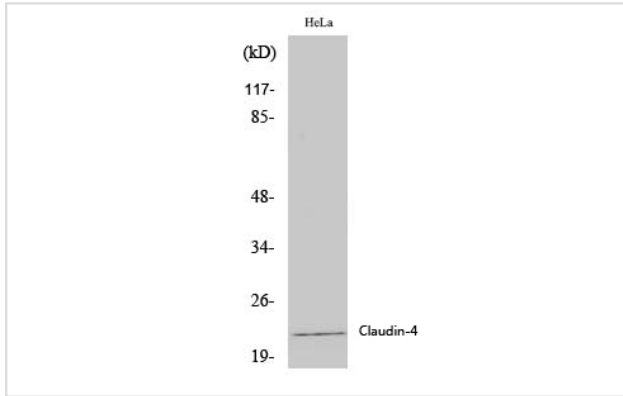
ELISA: 1/5000.

Not yet tested in other applications.

Images



Western Blot analysis of HeLa cells using Claudin-4 Polyclonal Antibody



Western Blot analysis of HELA cells using Claudin-4 Polyclonal Antibody

Note: This product is for in vitro research use only