

CLK1 Polyclonal Antibody

Catalog No: #40759

Package Size: #40759-1 50ul #40759-2 100ul

Orders: order@signalwayantibody.comSupport: tech@signalwayantibody.com

Description

Product Name	CLK1 Polyclonal Antibody
Host Species	Rabbit
Clonality	Polyclonal
Purification	The antibody was affinity-purified from rabbit antiserum by affinity-chromatography using epitope-specific immunogen.
Applications	WB IHC IF ELISA
Species Reactivity	Hu Ms
Specificity	CLK1 Polyclonal Antibody detects endogenous levels of CLK1 protein.
Immunogen Type	peptide
Immunogen Description	Synthesized peptide derived from the Internal region of human CLK1.
Target Name	CLK1
Other Names	CLK1; CLK; Dual specificity protein kinase CLK1; CDC-like kinase 1
Accession No.	Swiss-Prot: P49759NCBI Gene ID: 1195
Uniprot	P49759
GeneID	1195;
SDS-PAGE MW	57kd
Concentration	1mg/ml
Formulation	Liquid in PBS containing 50% glycerol, 0.5% BSA and 0.02% sodium azide.
Storage	Store at -20°C/1 year

Application Details

Western Blot: 1/500 - 1/2000.

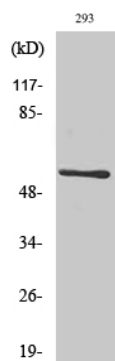
Immunohistochemistry: 1/100 - 1/300.

Immunofluorescence: 1/200 - 1/1000.

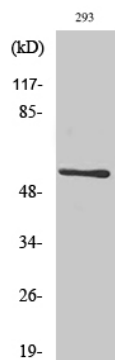
ELISA: 1/20000.

Not yet tested in other applications.

Images



Western Blot analysis of 293 cells using CLK1 Polyclonal Antibody



Western Blot analysis of 293 cells using CLK1 Polyclonal Antibody

Note: This product is for in vitro research use only