

## CLP36 Polyclonal Antibody

Catalog No: #40761

Package Size: #40761-1 50ul #40761-2 100ul

Orders: [order@signalwayantibody.com](mailto:order@signalwayantibody.com)Support: [tech@signalwayantibody.com](mailto:tech@signalwayantibody.com)

## Description

Product Name	CLP36 Polyclonal Antibody
Host Species	Rabbit
Clonality	Polyclonal
Purification	The antibody was affinity-purified from rabbit antiserum by affinity-chromatography using epitope-specific immunogen.
Applications	WB IHC IF ELISA
Species Reactivity	Hu Ms Rt
Specificity	CLP36 Polyclonal Antibody detects endogenous levels of CLP36 protein.
Immunogen Type	peptide
Immunogen Description	Synthesized peptide derived from the Internal region of human CLP36.
Target Name	CLP36
Other Names	PDLIM1; CLIM1; CLP36; PDZ and LIM domain protein 1; C-terminal LIM domain protein 1; Elfin; LIM domain protein CLP-36
Accession No.	Swiss-Prot: O00151NCBI Gene ID: 9124
Uniprot	O00151
GeneID	9124;
SDS-PAGE MW	36kd
Concentration	1mg/ml
Formulation	Liquid in PBS containing 50% glycerol, 0.5% BSA and 0.02% sodium azide.
Storage	Store at -20°C/1 year

## Application Details

Western Blot: 1/500 - 1/2000.

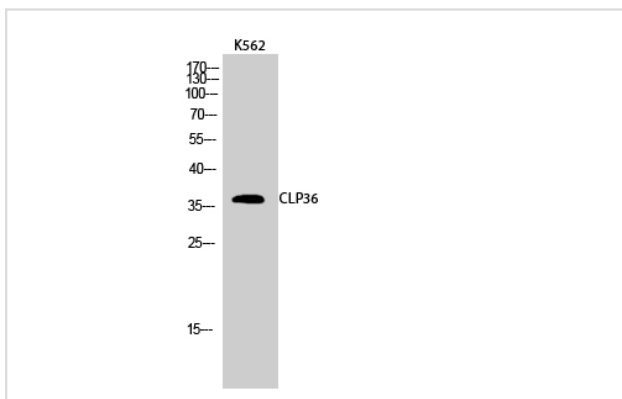
Immunohistochemistry: 1/100 - 1/300.

Immunofluorescence: 1/200 - 1/1000.

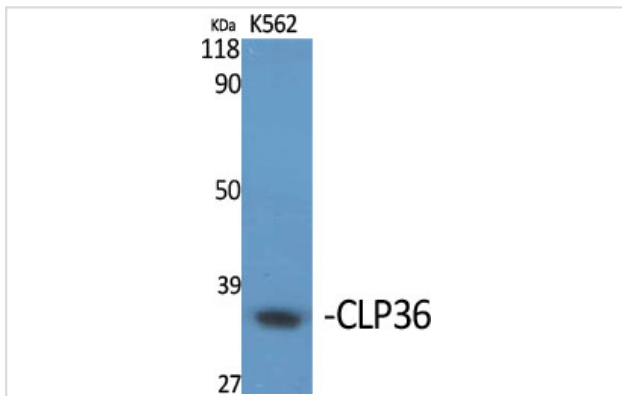
ELISA: 1/5000.

Not yet tested in other applications.

## Images



Western Blot analysis of K562 cells using CLP36 Polyclonal Antibody



Western Blot analysis of K562 cells using CLP36 Polyclonal Antibody

---

Note: This product is for in vitro research use only