

## c-Myb Polyclonal Antibody

Catalog No: #40763

Package Size: #40763-1 50ul #40763-2 100ul

Orders: [order@signalwayantibody.com](mailto:order@signalwayantibody.com)Support: [tech@signalwayantibody.com](mailto:tech@signalwayantibody.com)

## Description

Product Name	c-Myb Polyclonal Antibody
Host Species	Rabbit
Clonality	Polyclonal
Purification	The antibody was affinity-purified from rabbit antiserum by affinity-chromatography using epitope-specific immunogen.
Applications	WB IHC IF ELISA
Species Reactivity	Hu Ms
Specificity	c-Myb Polyclonal Antibody detects endogenous levels of c-Myb protein.
Immunogen Type	peptide
Immunogen Description	Synthesized peptide derived from human c-Myb around the non-phosphorylation site of S12.
Target Name	c-Myb
Other Names	MYB; Transcriptional activator Myb; Proto-oncogene c-Myb
Accession No.	Swiss-Prot: P10242NCBI Gene ID: 4602
Uniprot	P10242
GeneID	4602;
SDS-PAGE MW	72kd
Concentration	1mg/ml
Formulation	Liquid in PBS containing 50% glycerol, 0.5% BSA and 0.02% sodium azide.
Storage	Store at -20°C/1 year

## Application Details

Western Blot: 1/500 - 1/2000.

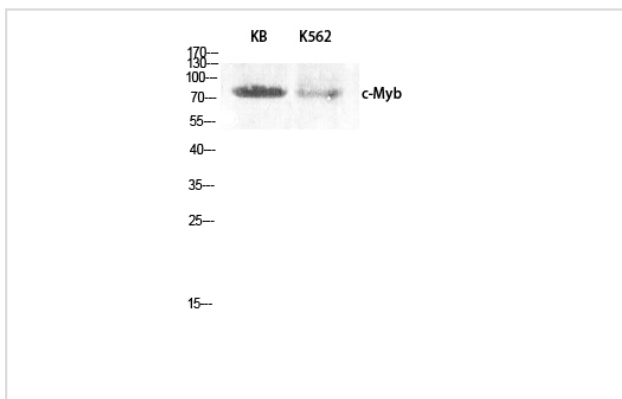
Immunohistochemistry: 1/100 - 1/300.

Immunofluorescence: 1/200 - 1/1000.

ELISA: 1/10000.

Not yet tested in other applications.

## Images



Western Blot analysis of KB K562 cells using c-Myb Polyclonal Antibody

Note: This product is for in vitro research use only