

c-Myc Polyclonal Antibody

Catalog No: #40764

Package Size: #40764-1 50ul #40764-2 100ul

Orders: order@signalwayantibody.comSupport: tech@signalwayantibody.com

Description

Product Name	c-Myc Polyclonal Antibody
Host Species	Rabbit
Clonality	Polyclonal
Purification	The antibody was affinity-purified from rabbit antiserum by affinity-chromatography using epitope-specific immunogen.
Applications	WB IHC ELISA
Species Reactivity	Hu Ms Rt
Specificity	c-Myc Polyclonal Antibody detects endogenous levels of c-Myc protein.
Immunogen Type	peptide
Immunogen Description	Synthesized peptide derived from human c-Myc around the non-phosphorylation site of T358.
Target Name	c-Myc
Other Names	MYC; BHLHE39; Myc proto-oncogene protein; Class E basic helix-loop-helix protein 39; bHLHe39; Proto-oncogene c-Myc; Transcription factor p64
Accession No.	Swiss-Prot: P01106NCBI Gene ID: 4609
Uniprot	P01106
GeneID	4609;
SDS-PAGE MW	48kd
Concentration	1mg/ml
Formulation	Liquid in PBS containing 50% glycerol, 0.5% BSA and 0.02% sodium azide.
Storage	Store at -20°C/1 year

Application Details

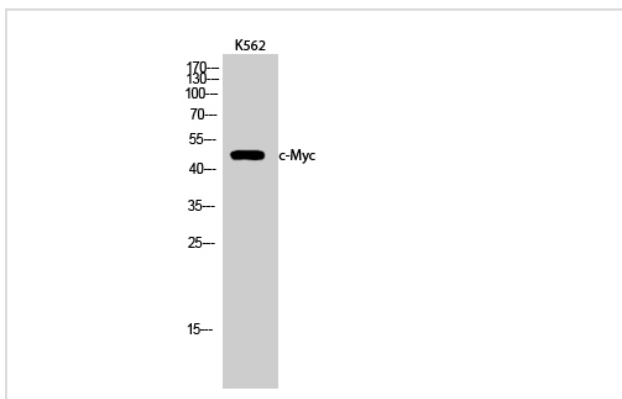
Western Blot: 1/500 - 1/2000.

Immunohistochemistry: 1/100 - 1/300.

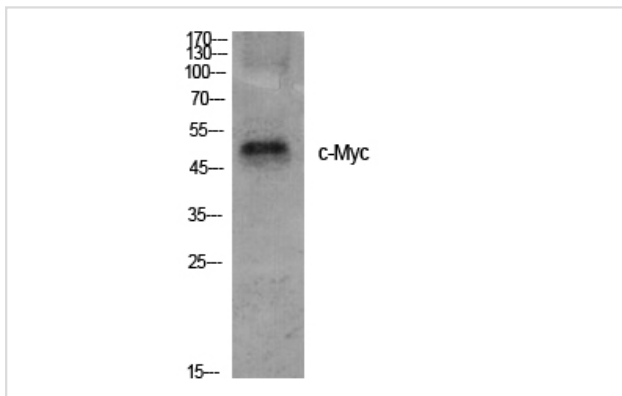
ELISA: 1/20000.

Not yet tested in other applications.

Images



Western Blot analysis of K562 cells using c-Myc Polyclonal Antibody



Western Blot analysis of various cells using c-Myc Polyclonal Antibody

Note: This product is for in vitro research use only