

## c-Myc Polyclonal Antibody

Catalog No: #40765

Package Size: #40765-1 50ul #40765-2 100ul

Orders: [order@signalwayantibody.com](mailto:order@signalwayantibody.com)Support: [tech@signalwayantibody.com](mailto:tech@signalwayantibody.com)

## Description

Product Name	c-Myc Polyclonal Antibody
Host Species	Rabbit
Clonality	Polyclonal
Purification	The antibody was affinity-purified from rabbit antiserum by affinity-chromatography using epitope-specific immunogen.
Applications	WB IHC IF ELISA
Species Reactivity	Hu Ms Rt
Specificity	c-Myc Polyclonal Antibody detects endogenous levels of c-Myc protein.
Immunogen Description	Synthesized peptide derived from the C-terminal region of human c-Myc.
Target Name	c-Myc
Other Names	MYC; BHLHE39; Myc proto-oncogene protein; Class E basic helix-loop-helix protein 39; bHLHe39; Proto-oncogene c-Myc; Transcription factor p64
Accession No.	Swiss-Prot: P01106NCBI Gene ID: 4609
Uniprot	P01106
GeneID	4609;
SDS-PAGE MW	49kd
Concentration	1mg/ml
Formulation	Liquid in PBS containing 50% glycerol, 0.5% BSA and 0.02% sodium azide.
Storage	Store at -20°C/1 year

## Application Details

Western Blot: 1/500 - 1/2000.

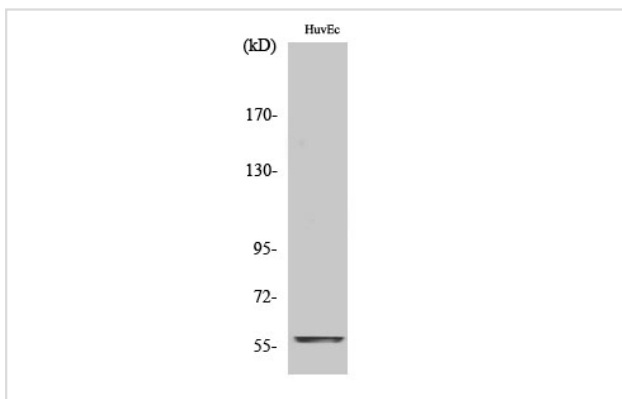
Immunohistochemistry: 1/100 - 1/300.

Immunofluorescence: 1/200 - 1/1000.

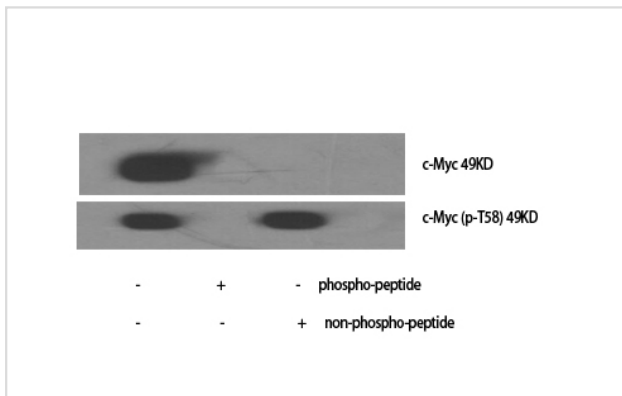
ELISA: 1/40000.

Not yet tested in other applications.

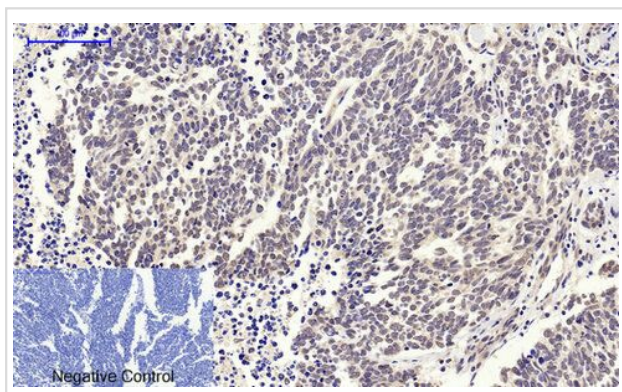
## Images



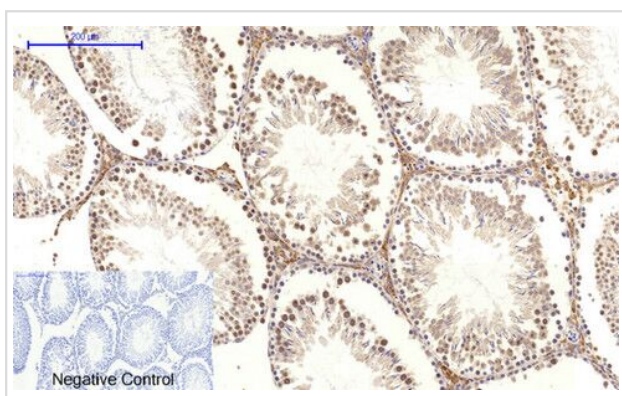
Western Blot analysis of HuvEc cells using c-Myc Polyclonal Antibody



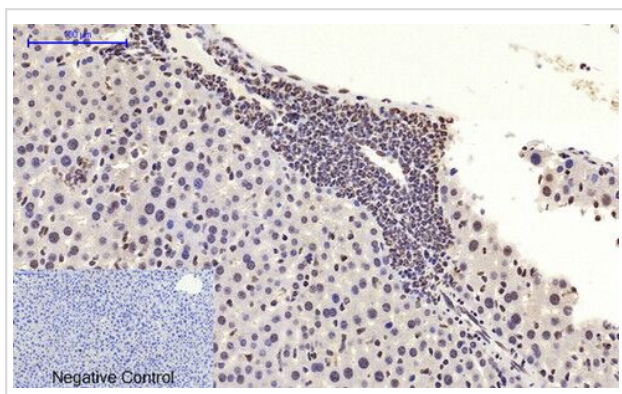
Western Blot analysis of various cells using c-Myc Polyclonal Antibody



Immunohistochemical analysis of paraffin-embedded human lung carcinoma tissue using c-Myc Polyclonal Antibody #40765.



Immunohistochemical analysis of paraffin-embedded RAT-testis tissue using c-Myc Polyclonal Antibody #40765.



Immunohistochemical analysis of paraffin-embedded mouse-liver tissue using c-Myc Polyclonal Antibody #40765.

---

Note: This product is for in vitro research use only