

## COL2A1 Polyclonal Antibody

Catalog No: #40772

Package Size: #40772-1 50ul #40772-2 100ul

Orders: [order@signalwayantibody.com](mailto:order@signalwayantibody.com)Support: [tech@signalwayantibody.com](mailto:tech@signalwayantibody.com)

## Description

Product Name	COL2A1 Polyclonal Antibody
Host Species	Rabbit
Clonality	Polyclonal
Purification	The antibody was affinity-purified from rabbit antiserum by affinity-chromatography using epitope-specific immunogen.
Applications	WB IHC IF ELISA
Species Reactivity	Hu Ms Rt
Specificity	COL2A1 Polyclonal Antibody detects endogenous levels of COL2A1 protein.
Immunogen Type	peptide
Immunogen Description	Synthesized peptide derived from the N-terminal region of human COL2A1.
Target Name	COL2A1
Other Names	COL2A1; Collagen alpha-1(II) chain; Alpha-1 type II collagen
Accession No.	Swiss-Prot: P02458NCBI Gene ID: 1280
Uniprot	P02458
GeneID	1280;
SDS-PAGE MW	140kd
Concentration	1mg/ml
Formulation	Liquid in PBS containing 50% glycerol, 0.5% BSA and 0.02% sodium azide.
Storage	Store at -20°C/1 year

## Application Details

Western Blot: 1/500 - 1/2000.

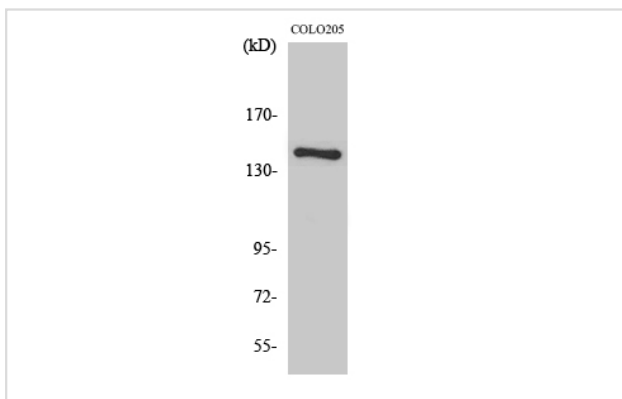
Immunohistochemistry: 1/100 - 1/300.

Immunofluorescence: 1/200 - 1/1000.

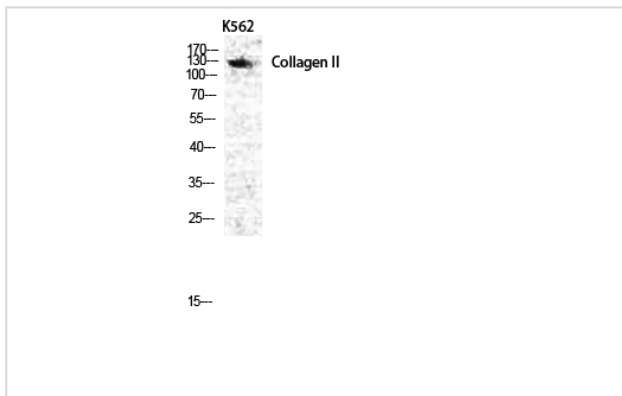
ELISA: 1/20000.

Not yet tested in other applications.

## Images



Western Blot analysis of COLO205 cells using COL2A1 Polyclonal Antibody



Western Blot analysis of K562 cells using COL2A1 Polyclonal Antibody

---

Note: This product is for in vitro research use only