

Connexin 43 Polyclonal Antibody

Catalog No: #40777

Package Size: #40777-1 50ul #40777-2 100ul

Orders: order@signalwayantibody.comSupport: tech@signalwayantibody.com

Description

Product Name	Connexin 43 Polyclonal Antibody
Host Species	Rabbit
Clonality	Polyclonal
Purification	The antibody was affinity-purified from rabbit antiserum by affinity-chromatography using epitope-specific immunogen.
Applications	WB IHC IF ELISA
Species Reactivity	Hu Ms Rt
Specificity	Connexin 43 Polyclonal Antibody detects endogenous levels of Connexin 43 protein.
Immunogen Type	peptide
Immunogen Description	Synthesized peptide derived from the C-terminal region of human Connexin 43.
Target Name	Connexin 43
Other Names	GJA1; GJAL; Gap junction alpha-1 protein; Connexin-43; Cx43; Gap junction 43 kDa heart protein
Accession No.	Swiss-Prot: P17302NCBI Gene ID: 2697
Uniprot	P17302
GeneID	2697;
SDS-PAGE MW	43kd
Concentration	1mg/ml
Formulation	Liquid in PBS containing 50% glycerol, 0.5% BSA and 0.02% sodium azide.
Storage	Store at -20°C/1 year

Application Details

Western Blot: 1/500 - 1/2000.

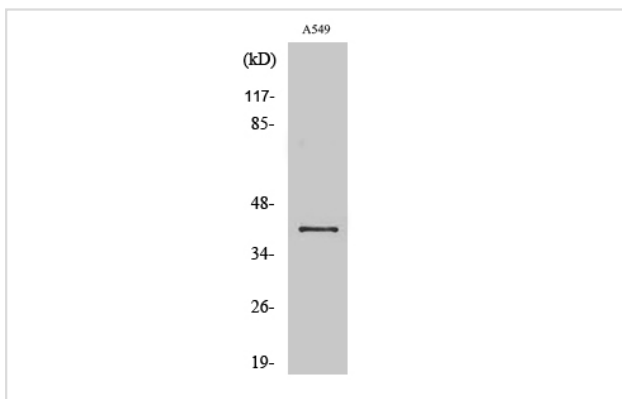
Immunohistochemistry: 1/100 - 1/300.

Immunofluorescence: 1/200 - 1/1000.

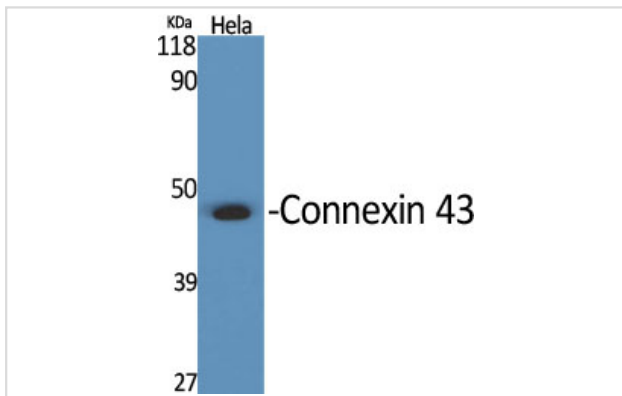
ELISA: 1/10000.

Not yet tested in other applications.

Images



Western Blot analysis of A549 cells using Connexin 43 Polyclonal Antibody



Western Blot analysis of HELA cells using Connexin 43 Polyclonal Antibody

Note: This product is for in vitro research use only