

Connexin-26 Polyclonal Antibody

Catalog No: #40778

Package Size: #40778-1 50ul #40778-2 100ul

Orders: order@signalwayantibody.comSupport: tech@signalwayantibody.com

Description

Product Name	Connexin-26 Polyclonal Antibody
Host Species	Rabbit
Clonality	Polyclonal
Purification	The antibody was affinity-purified from rabbit antiserum by affinity-chromatography using epitope-specific immunogen.
Applications	WB ELISA
Species Reactivity	Hu Ms Rt
Specificity	Connexin-26 Polyclonal Antibody detects endogenous levels of Connexin-26 protein.
Immunogen Type	peptide
Immunogen Description	Synthesized peptide derived from the Internal region of human Connexin-26.
Target Name	Connexin-26
Other Names	GJB2; Gap junction beta-2 protein; Connexin-26; Cx26
Accession No.	Swiss-Prot: P29033NCBI Gene ID: 2706
Uniprot	P29033
GeneID	2706;
SDS-PAGE MW	26kd
Concentration	1mg/ml
Formulation	Liquid in PBS containing 50% glycerol, 0.5% BSA and 0.02% sodium azide.
Storage	Store at -20°C/1 year

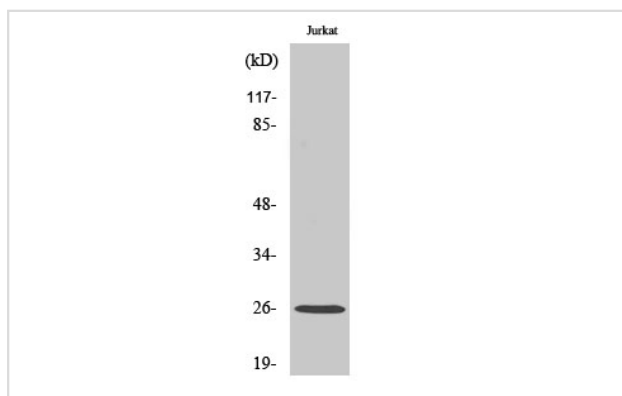
Application Details

Western Blot: 1/500 - 1/2000.

ELISA: 1/5000.

Not yet tested in other applications.

Images



Western Blot analysis of Jurkat cells using Connexin-26 Polyclonal Antibody

Note: This product is for in vitro research use only