

Cox-2 Polyclonal Antibody

Catalog No: #40781

Package Size: #40781-1 50ul #40781-2 100ul

Orders: order@signalwayantibody.comSupport: tech@signalwayantibody.com

Description

| | |
|-----------------------|--|
| Product Name | Cox-2 Polyclonal Antibody |
| Host Species | Rabbit |
| Clonality | Polyclonal |
| Purification | The antibody was affinity-purified from rabbit antiserum by affinity-chromatography using epitope-specific immunogen. |
| Applications | WB IHC IF ELISA |
| Species Reactivity | Hu |
| Specificity | Cox-2 Polyclonal Antibody detects endogenous levels of Cox-2 protein. |
| Immunogen Type | peptide |
| Immunogen Description | Synthesized peptide derived from the C-terminal region of human Cox-2. |
| Target Name | Cox-2 |
| Other Names | PTGS2; COX2; Prostaglandin G/H synthase 2; Cyclooxygenase-2; COX-2; PHS II; Prostaglandin H2 synthase 2; PGH synthase 2; PGHS-2; Prostaglandin-endoperoxide synthase 2 |
| Accession No. | Swiss-Prot: P35354NCBI Gene ID: 5743 |
| Uniprot | P35354 |
| GeneID | 5743; |
| SDS-PAGE MW | 80kd |
| Concentration | 1mg/ml |
| Formulation | Liquid in PBS containing 50% glycerol, 0.5% BSA and 0.02% sodium azide. |
| Storage | Store at -20°C/1 year |

Application Details

Western Blot: 1/500 - 1/2000.

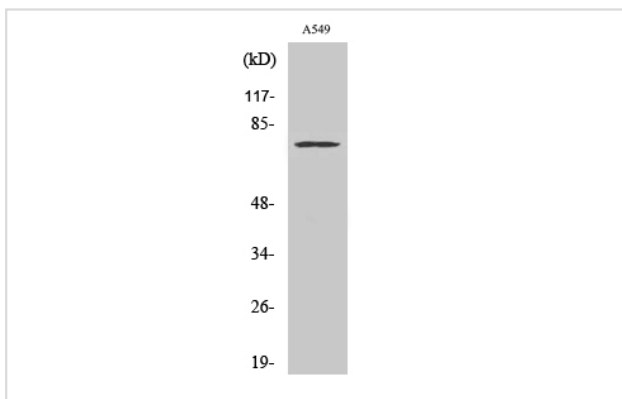
Immunohistochemistry: 1/100 - 1/300.

Immunofluorescence: 1/200 - 1/1000.

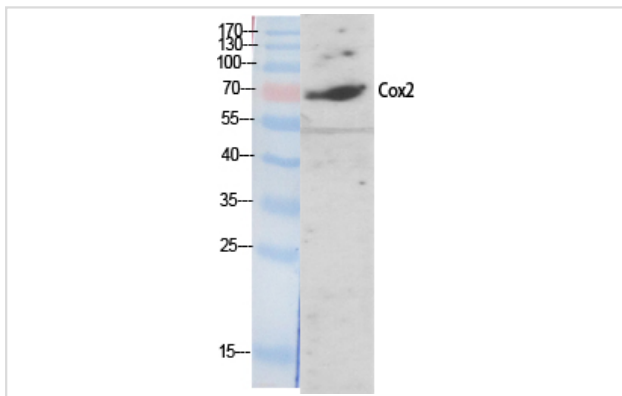
ELISA: 1/20000.

Not yet tested in other applications.

Images



Western Blot analysis of A549 cells using Cox-2 Polyclonal Antibody



Western Blot analysis of VEC cells using Cox-2 Polyclonal Antibody

Note: This product is for in vitro research use only