

CREB-1 Polyclonal Antibody

Catalog No: #40783

Package Size: #40783-1 50ul #40783-2 100ul

Orders: order@signalwayantibody.comSupport: tech@signalwayantibody.com

Description

Product Name	CREB-1 Polyclonal Antibody
Host Species	Rabbit
Clonality	Polyclonal
Purification	The antibody was affinity-purified from rabbit antiserum by affinity-chromatography using epitope-specific immunogen.
Applications	WB IHC ELISA
Species Reactivity	Hu Ms Rt
Specificity	CREB-1 Polyclonal Antibody detects endogenous levels of CREB-1 protein.
Immunogen Type	peptide
Immunogen Description	Synthesized peptide derived from human CREB-1 around the non-phosphorylation site of S133.
Target Name	CREB-1
Other Names	CREB1; Cyclic AMP-responsive element-binding protein 1; CREB-1; cAMP-responsive element-binding protein 1
Accession No.	Swiss-Prot: P16220NCBI Gene ID: 1385
Uniprot	P16220
GeneID	1385;
SDS-PAGE MW	37kd
Concentration	1mg/ml
Formulation	Liquid in PBS containing 50% glycerol, 0.5% BSA and 0.02% sodium azide.
Storage	Store at -20°C/1 year

Application Details

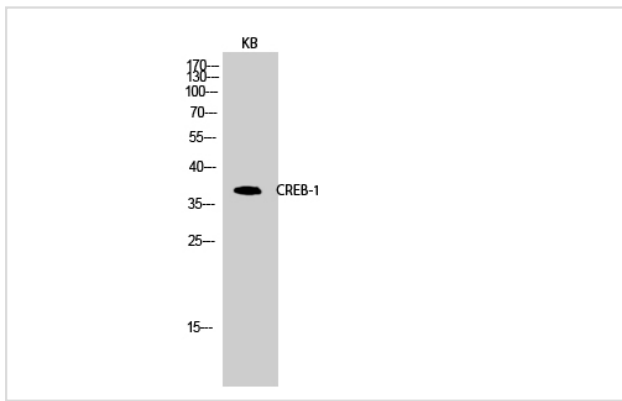
Western Blot: 1/500 - 1/2000.

Immunohistochemistry: 1/100 - 1/300.

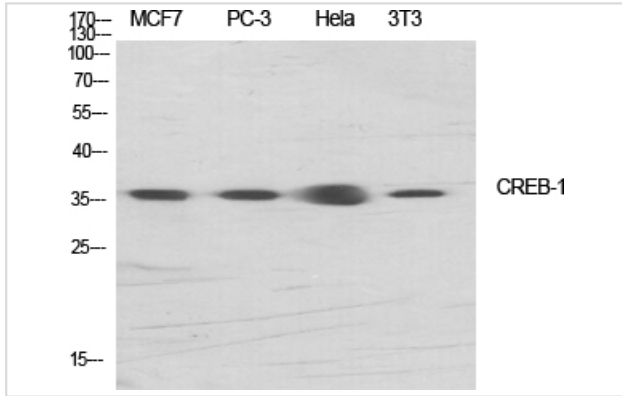
ELISA: 1/20000.

Not yet tested in other applications.

Images



Western Blot analysis of KB cells using CREB-1 Polyclonal Antibody



Western Blot analysis of HeLa NIH-3T3 MCF7 PC-3 cells using CREB-1 Polyclonal Antibody

Note: This product is for in vitro research use only