

## Sotalol hydrochloride

Catalog No: #S0483

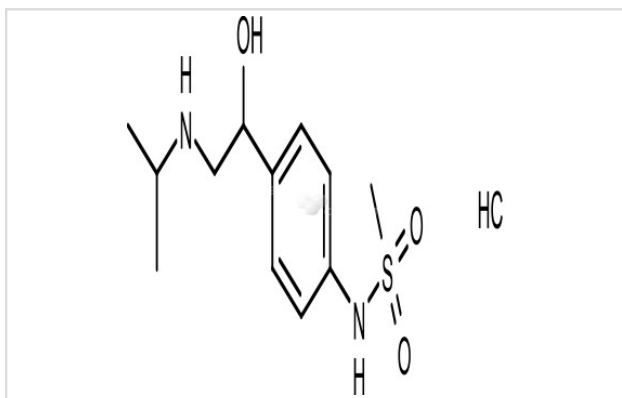
Orders: order@signalwayantibody.com

Support: tech@signalwayantibody.com

## Description

Product Name	Sotalol hydrochloride
Brief Description	Inhibitors
Purification	99.86%
Target Name	Adrenergic Receptor antagonist; Potassium Channel antagonist
Calculated MW	308.82
Formulation	C <sub>12</sub> H <sub>21</sub> ClN <sub>2</sub> O <sub>3</sub> S
Storage	3 years -20°C powder; 2 years -80°C in solvent;

## Images



## Product Description

Research Area: Cardiovascular System  
 SMILES: Cl.CC(C)NCC(O)C1=CC=C(NS(C)(=O)=O)C=C1  
 Pathways: GPCR/G Protein; Membrane transporter/Ion channel  
 Receptor:  $\beta$ -adrenergic receptor; Potassium Channel  
 Boiling pt: 443.3°C  
 Melting pt: 218-220°C  
 Solubility: Water: 62 mg/mL (200.76 mM); DMSO: 62 mg/mL (200.76 mM)  
 Appearance: White Powder  
 Remark: For obtaining a higher solubility, please warm the tube at 37 °C and shake it in the ultrasonic bath for a while. Stock solution can be stored below -20 °C for several month.

## References

1. Lowe MD, et al. Br J Pharmacol. 2002 Jan;135(2):451-61.

Note: This product is for in vitro research use only