

CRF-RII Polyclonal Antibody

Catalog No: #40786

Package Size: #40786-1 50ul #40786-2 100ul

Orders: order@signalwayantibody.comSupport: tech@signalwayantibody.com

Description

Product Name	CRF-RII Polyclonal Antibody
Host Species	Rabbit
Clonality	Polyclonal
Purification	The antibody was affinity-purified from rabbit antiserum by affinity-chromatography using epitope-specific immunogen.
Applications	WB IF ELISA
Species Reactivity	Hu Ms Rt
Specificity	CRF-RII Polyclonal Antibody detects endogenous levels of CRF-RII protein.
Immunogen Type	peptide
Immunogen Description	Synthesized peptide derived from the Internal region of human CRF-RII.
Target Name	CRF-RII
Other Names	CRHR2; CRF2R; CRH2R; Corticotropin-releasing factor receptor 2; CRF-R-2; CRF-R2; CRFR-2; Corticotropin-releasing hormone receptor 2; CRH-R-2; CRH-R2
Accession No.	Swiss-Prot: Q13324NCBI Gene ID: 1395
Uniprot	Q13324
GeneID	1395;
SDS-PAGE MW	47kd
Concentration	1mg/ml
Formulation	Liquid in PBS containing 50% glycerol, 0.5% BSA and 0.02% sodium azide.
Storage	Store at -20°C/1 year

Application Details

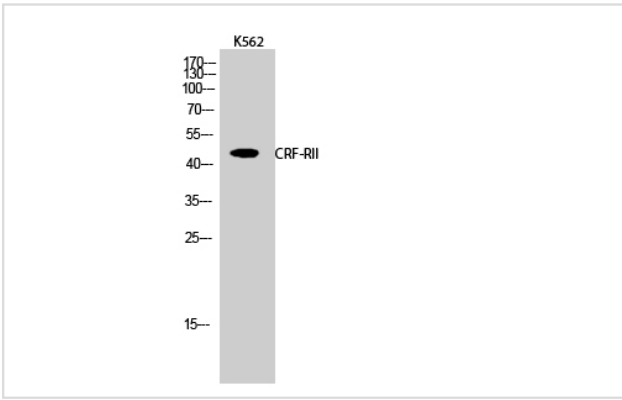
Western Blot: 1/500 - 1/2000.

Immunofluorescence: 1/200 - 1/1000.

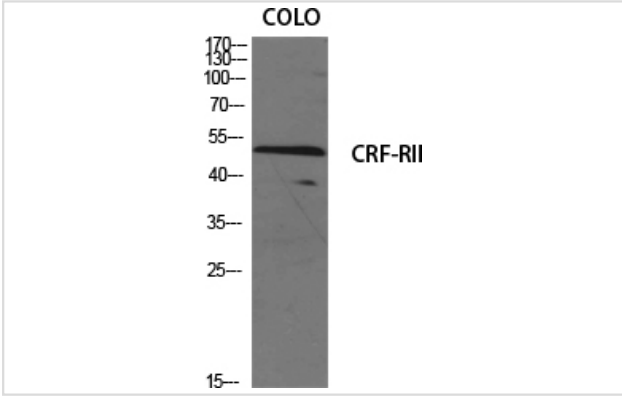
ELISA: 1/10000.

Not yet tested in other applications.

Images



Western Blot analysis of K562 cells using CRF-RII Polyclonal Antibody



Western Blot analysis of COLO cells using CRF-RII Polyclonal Antibody

Note: This product is for in vitro research use only