

CRP1 Polyclonal Antibody

Catalog No: #40787

Package Size: #40787-1 50ul #40787-2 100ul

Orders: order@signalwayantibody.com

Support: tech@signalwayantibody.com

Description

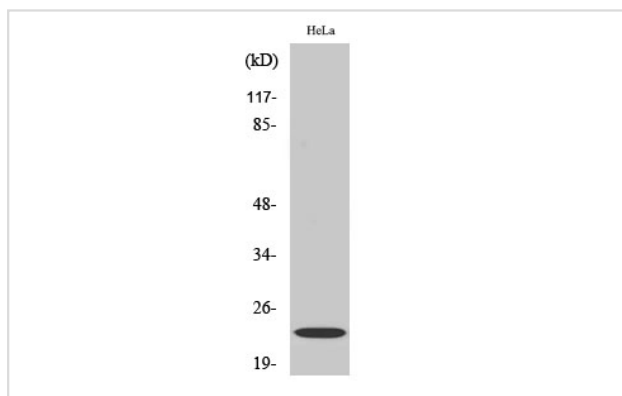
Product Name	CRP1 Polyclonal Antibody
Host Species	Rabbit
Clonality	Polyclonal
Purification	The antibody was affinity-purified from rabbit antiserum by affinity-chromatography using epitope-specific immunogen.
Applications	WB IHC
Species Reactivity	Hu Ms Rt
Specificity	CRP1 Polyclonal Antibody detects endogenous levels of CRP1 protein.
Immunogen Type	peptide
Immunogen Description	Synthesized peptide derived from the Internal region of human CRP1.
Target Name	CRP1
Other Names	CSRP1; CSRP; CYRP; Cysteine and glycine-rich protein 1; Cysteine-rich protein 1; CRP; CRP1
Accession No.	Swiss-Prot: P21291NCBI Gene ID: 1465
Uniprot	P21291
GeneID	1465;
SDS-PAGE MW	22kd
Concentration	1mg/ml
Formulation	Liquid in PBS containing 50% glycerol, 0.5% BSA and 0.02% sodium azide.
Storage	Store at -20°C/1 year

Application Details

Western Blot: 1/500 - 1/2000.

Immunohistochemistry: 1/100 - 1/300.

Images



Western Blot analysis of Jurkat cells using CRP1 Polyclonal Antibody

Note: This product is for in vitro research use only