

## Csk Polyclonal Antibody

Catalog No: #40788

Package Size: #40788-1 50ul #40788-2 100ul

Orders: order@signalwayantibody.com

Support: tech@signalwayantibody.com

## Description

Product Name	Csk Polyclonal Antibody
Host Species	Rabbit
Clonality	Polyclonal
Purification	The antibody was affinity-purified from rabbit antiserum by affinity-chromatography using epitope-specific immunogen.
Applications	WB IHC ELISA
Species Reactivity	Hu Ms Rt
Specificity	Csk Polyclonal Antibody detects endogenous levels of Csk protein.
Immunogen Type	peptide
Immunogen Description	Synthesized peptide derived from human Csk around the non-phosphorylation site of S364.
Target Name	Csk
Other Names	CSK; Tyrosine-protein kinase CSK; C-Src kinase; Protein-tyrosine kinase CYL
Accession No.	Swiss-Prot: P41240NCBI Gene ID: 1445
Uniprot	P41240
GeneID	1445;
SDS-PAGE MW	50kd
Concentration	1mg/ml
Formulation	Liquid in PBS containing 50% glycerol, 0.5% BSA and 0.02% sodium azide.
Storage	Store at -20°C/1 year

## Application Details

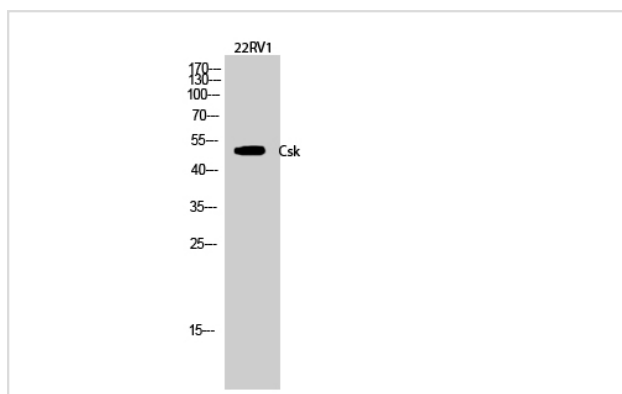
Western Blot: 1/500 - 1/2000.

Immunohistochemistry: 1/100 - 1/300.

ELISA: 1/20000.

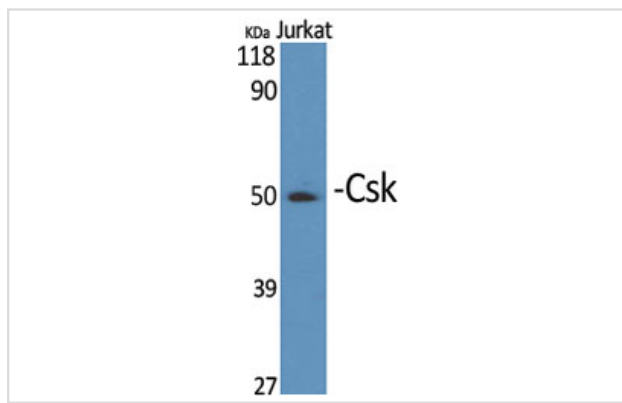
Not yet tested in other applications.

## Images



Western Blot analysis of 22RV1 cells using Csk Polyclonal Antibody

Western Blot analysis of Jurkat cells using Csk Polyclonal Antibody



Note: This product is for in vitro research use only