

## CTDSP1 Polyclonal Antibody

Catalog No: #40794

Package Size: #40794-1 50ul #40794-2 100ul

Orders: order@signalwayantibody.com

Support: tech@signalwayantibody.com

## Description

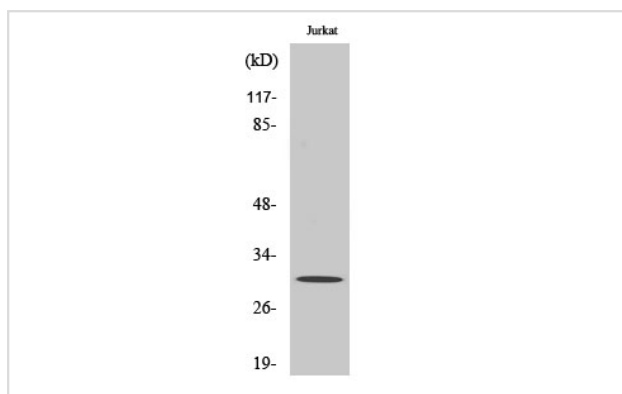
Product Name	CTDSP1 Polyclonal Antibody
Host Species	Rabbit
Clonality	Polyclonal
Purification	The antibody was affinity-purified from rabbit antiserum by affinity-chromatography using epitope-specific immunogen.
Applications	WB IHC
Species Reactivity	Hu Ms Rt
Specificity	CTDSP1 Polyclonal Antibody detects endogenous levels of CTDSP1 protein.
Immunogen Type	peptide
Immunogen Description	Synthesized peptide derived from the N-terminal region of human CTDSP1.
Target Name	CTDSP1
Other Names	CTDSP1; NIF3; NLIIF; SCP1; Carboxy-terminal domain RNA polymerase II polypeptide A small phosphatase 1; Nuclear LIM interactor-interacting factor 3; NLI-IF; NLI-interacting factor 3; Small C-terminal domain phosphatase 1; SCP1; Small CTD ph
Accession No.	Swiss-Prot: Q9GZU7NCBI Gene ID: 58190
Uniprot	Q9GZU7
GeneID	58190;
SDS-PAGE MW	30kd
Concentration	1mg/ml
Formulation	Liquid in PBS containing 50% glycerol, 0.5% BSA and 0.02% sodium azide.
Storage	Store at -20°C/1 year

## Application Details

Western Blot: 1/500 - 1/2000.

Immunohistochemistry: 1/100 - 1/300.

## Images



Western Blot analysis of HuvEc cells using CTDSP1 Polyclonal Antibody

---

Note: This product is for in vitro research use only