

CUL-3 Polyclonal Antibody

Catalog No: #40798

Package Size: #40798-1 50ul #40798-2 100ul

Orders: order@signalwayantibody.com

Support: tech@signalwayantibody.com

Description

Product Name	CUL-3 Polyclonal Antibody
Host Species	Rabbit
Clonality	Polyclonal
Purification	The antibody was affinity-purified from rabbit antiserum by affinity-chromatography using epitope-specific immunogen.
Applications	WB IHC ELISA
Species Reactivity	Hu Ms
Specificity	CUL-3 Polyclonal Antibody detects endogenous levels of CUL-3 protein.
Immunogen Type	peptide
Immunogen Description	Synthesized peptide derived from the N-terminal region of human CUL-3.
Target Name	CUL-3
Other Names	CUL3; KIAA0617; Cullin-3; CUL-3
Accession No.	Swiss-Prot: Q13618NCBI Gene ID: 8452
Uniprot	Q13618
GeneID	8452;
SDS-PAGE MW	90kd
Concentration	1mg/ml
Formulation	Liquid in PBS containing 50% glycerol, 0.5% BSA and 0.02% sodium azide.
Storage	Store at -20°C/1 year

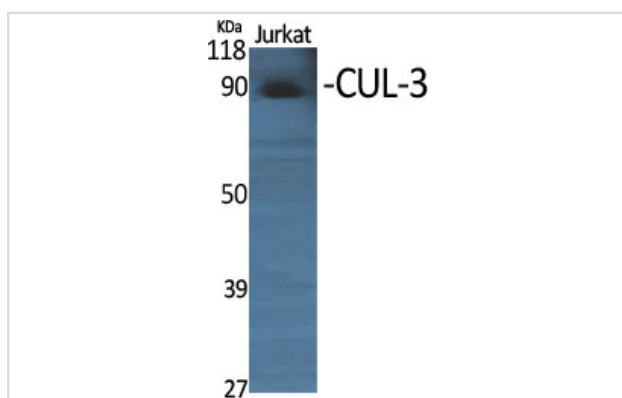
Application Details

Western Blot: 1:500-2000

Immunohistochemistry: 1/100 - 1/300

ELISA: 1/5000

Images



Western Blot analysis of Jurkat cells using CUL-3 Polyclonal Antibody

Note: This product is for in vitro research use only