

CXCR-7 Polyclonal Antibody

Catalog No: #40799

Package Size: #40799-1 50ul #40799-2 100ul

Orders: order@signalwayantibody.comSupport: tech@signalwayantibody.com

Description

Product Name	CXCR-7 Polyclonal Antibody
Host Species	Rabbit
Clonality	Polyclonal
Purification	The antibody was affinity-purified from rabbit antiserum by affinity-chromatography using epitope-specific immunogen.
Applications	WB IF ELISA
Species Reactivity	Hu Ms Rt Mk
Specificity	CXCR-7 Polyclonal Antibody detects endogenous levels of CXCR-7 protein.
Immunogen Type	peptide
Immunogen Description	Synthesized peptide derived from the C-terminal region of human CXCR-7.
Target Name	CXCR-7
Other Names	CXCR7; CMKOR1; GPR159; RDC1; C-X-C chemokine receptor type 7; CXC-R7; CXCR-7; Chemokine orphan receptor 1; G-protein coupled receptor 159; G-protein coupled receptor RDC1 homolog; RDC-1
Accession No.	Swiss-Prot: P25106NCBI Gene ID: 57007
Uniprot	P25106
GeneID	57007;
SDS-PAGE MW	41kd
Concentration	1mg/ml
Formulation	Liquid in PBS containing 50% glycerol, 0.5% BSA and 0.02% sodium azide.
Storage	Store at -20°C/1 year

Application Details

Western Blot: 1/500 - 1/2000.

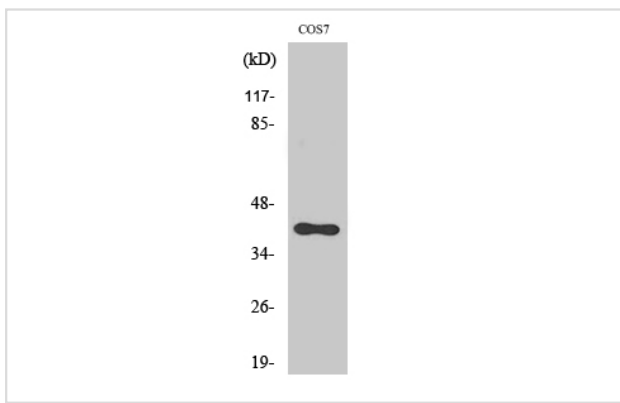
Immunofluorescence: 1/200 - 1/1000.

ELISA: 1/20000.

Not yet tested in other applications.

Images

Western Blot analysis of COS7 cells using CXCR-7 Polyclonal Antibody



Note: This product is for in vitro research use only