

Cyclin E1 Polyclonal Antibody

Catalog No: #40804

Package Size: #40804-1 50ul #40804-2 100ul

Orders: order@signalwayantibody.comSupport: tech@signalwayantibody.com

Description

Product Name	Cyclin E1 Polyclonal Antibody
Host Species	Rabbit
Clonality	Polyclonal
Purification	The antibody was affinity-purified from rabbit antiserum by affinity-chromatography using epitope-specific immunogen.
Applications	WB IHC IF ELISA
Species Reactivity	Hu Ms Rt
Specificity	Cyclin E1 Polyclonal Antibody detects endogenous levels of Cyclin E1 protein.
Immunogen Type	peptide
Immunogen Description	Synthesized peptide derived from the Internal region of human Cyclin E1.
Target Name	Cyclin E1
Other Names	CCNE1; CCNE; G1/S-specific cyclin-E1
Accession No.	Swiss-Prot: P24864NCBI Gene ID: 898
Uniprot	P24864
GeneID	898;
SDS-PAGE MW	49kd
Concentration	1mg/ml
Formulation	Liquid in PBS containing 50% glycerol, 0.5% BSA and 0.02% sodium azide.
Storage	Store at -20°C/1 year

Application Details

Western Blot: 1/500 - 1/2000.

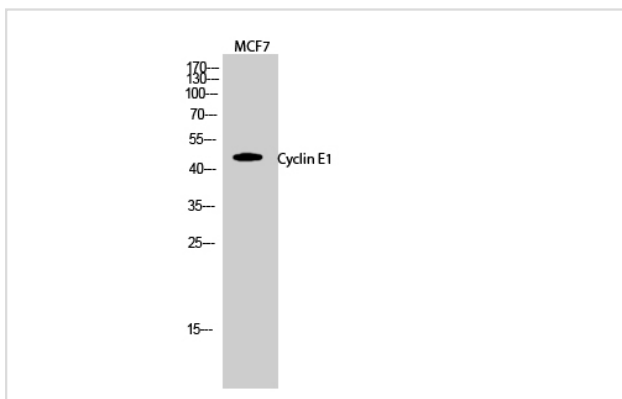
Immunohistochemistry: 1/100 - 1/300.

Immunofluorescence: 1/200 - 1/1000.

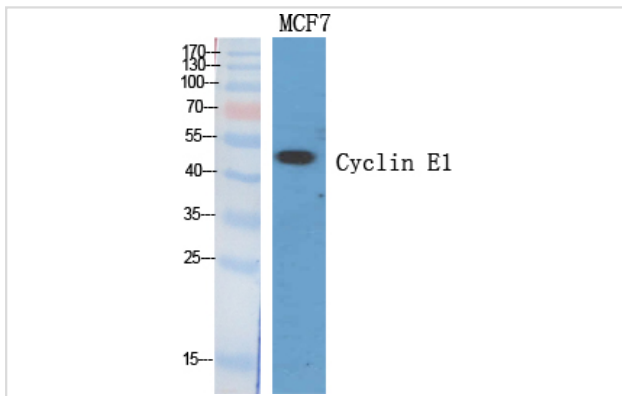
ELISA: 1/20000.

Not yet tested in other applications.

Images



Western Blot analysis of MCF7 cells using Cyclin E1 Polyclonal Antibody



Western Blot analysis of MCF7 cells using Cyclin E1 Polyclonal Antibody

Note: This product is for in vitro research use only