

## Cyclin L1 Polyclonal Antibody

Catalog No: #40807

Package Size: #40807-1 50ul #40807-2 100ul

Orders: order@signalwayantibody.com

Support: tech@signalwayantibody.com

## Description

Product Name	Cyclin L1 Polyclonal Antibody
Host Species	Rabbit
Clonality	Polyclonal
Purification	The antibody was affinity-purified from rabbit antiserum by affinity-chromatography using epitope-specific immunogen.
Applications	WB IHC ELISA
Species Reactivity	Hu Ms Rt
Specificity	Cyclin L1 Polyclonal Antibody detects endogenous levels of Cyclin L1 protein.
Immunogen Type	peptide
Immunogen Description	Synthesized peptide derived from the C-terminal region of human Cyclin L1.
Target Name	Cyclin L1
Other Names	CCNL1; BM-001; Cyclin-L1; Cyclin-L
Accession No.	Swiss-Prot: Q9UK58NCBI Gene ID: 57018
Uniprot	Q9UK58
GeneID	57018;
SDS-PAGE MW	60kd
Concentration	1mg/ml
Formulation	Liquid in PBS containing 50% glycerol, 0.5% BSA and 0.02% sodium azide.
Storage	Store at -20°C/1 year

## Application Details

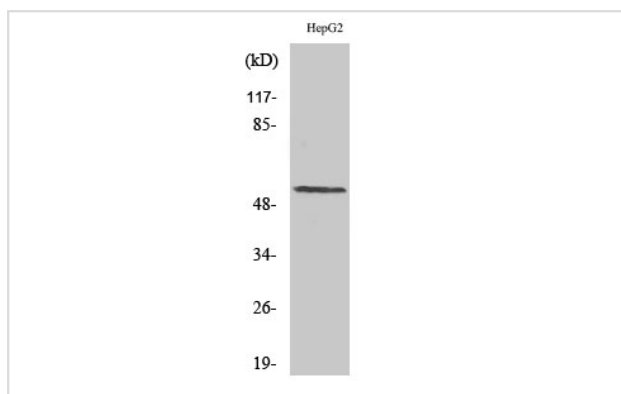
Western Blot: 1/500 - 1/2000.

Immunohistochemistry: 1/100 - 1/300.

ELISA: 1/10000.

Not yet tested in other applications.

## Images



Western Blot analysis of HepG2 cells using Cyclin L1 Polyclonal Antibody

---

Note: This product is for in vitro research use only