

## CYP19A1 Polyclonal Antibody

Catalog No: #40809

Package Size: #40809-1 50ul #40809-2 100ul

Orders: [order@signalwayantibody.com](mailto:order@signalwayantibody.com)Support: [tech@signalwayantibody.com](mailto:tech@signalwayantibody.com)

## Description

|                       |   |
|-----------------------|---|
| Product Name          | CYP19A1 Polyclonal Antibody   |
| Host Species          | Rabbit  |
| Clonality             | Polyclonal  |
| Purification          | The antibody was affinity-purified from rabbit antiserum by affinity-chromatography using epitope-specific immunogen. |
| Applications          | WB IHC IF ELISA   |
| Species Reactivity    | Hu Ms Rt  |
| Specificity           | CYP19A1 Polyclonal Antibody detects endogenous levels of CYP19A1 protein.   |
| Immunogen Type        | peptide   |
| Immunogen Description | Synthesized peptide derived from the Internal region of human CYP19A1.  |
| Target Name           | CYP19A1   |
| Other Names           | CYP19A1; ARO1; CYAR; CYP19; Cytochrome P450 19A1; Aromatase; CYPXIX; Cytochrome P-450AROM; Estrogen synthase          |
| Accession No.         | Swiss-Prot: P11511NCBI Gene ID: 1588  |
| Uniprot               | P11511  |
| GeneID                | 1588;   |
| SDS-PAGE MW           | 53kd  |
| Concentration         | 1mg/ml  |
| Formulation           | Liquid in PBS containing 50% glycerol, 0.5% BSA and 0.02% sodium azide.   |
| Storage               | Store at -20°C/1 year   |

## Application Details

Western Blot: 1/500 - 1/2000.

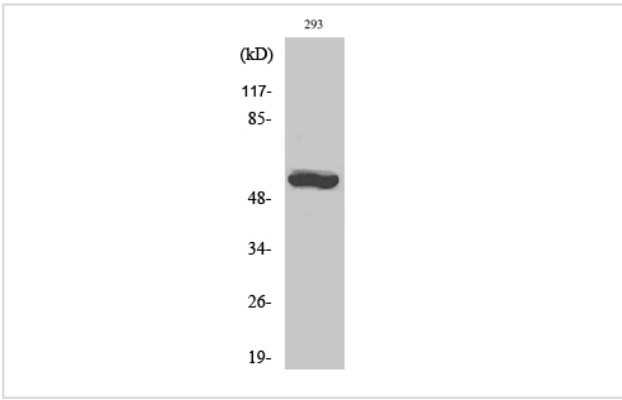
Immunohistochemistry: 1/100 - 1/300.

Immunofluorescence: 1/200 - 1/1000.

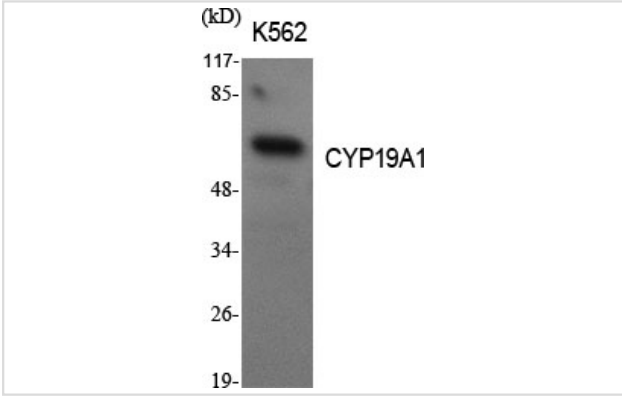
ELISA: 1/20000.

Not yet tested in other applications.

## Images



Western Blot analysis of 293 cells using CYP19A1 Polyclonal Antibody



Western Blot analysis of K562 cells using CYP19A1 Polyclonal Antibody

---

Note: This product is for in vitro research use only